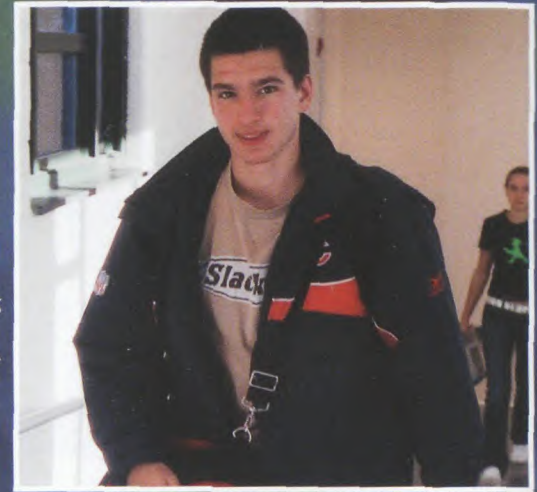


Building the Connection

Connecting the New with the Old

Fame comes in all different forms and for many different reasons. Scotch Plains-Fanwood High School is famous for its unconnected second floors. This year this legendary trait will be no more as the new and old sections are finally linked, and students will no longer have to run across the building. An added luxury is that students now may take their time and chat with friends along the way. Our new hallway is a prime example of making connections as it literally brings the school and its students closer together.

RIGHT: Freshman Jamie Sensor is now able to get to his locker with less effort, thanks to the new hallway.



BELOW: After one year of construction, the hallway connecting the two second floors is completed. Students no longer have to walk downstairs to get back upstairs!



RIGHT: With the hallway blocked off, Senior Kathy Zinman is trapped in the link... oh well! At least she has an excuse for being late.



BELOW: Construction continued through the summer and into the first month of school, delaying the opening of the hallway even longer. No wonder this worker is hard at work to finish the job.



LEFT: The new hallway might seem intimidating, but when students buddy up like Seniors Jessica Kim and Abraham Nam do, the hallway doesn't seem like such a tough obstacle to tackle.



RIGHT: For Freshman Amanda Makowski, five minutes is more than enough time to get to class with the new addition to the high school.

