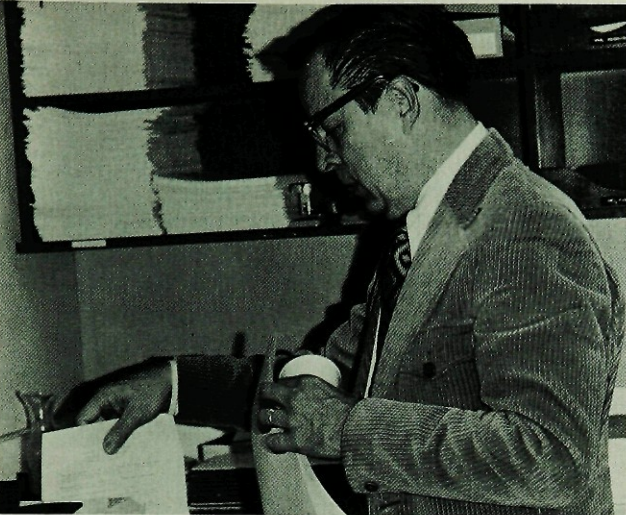
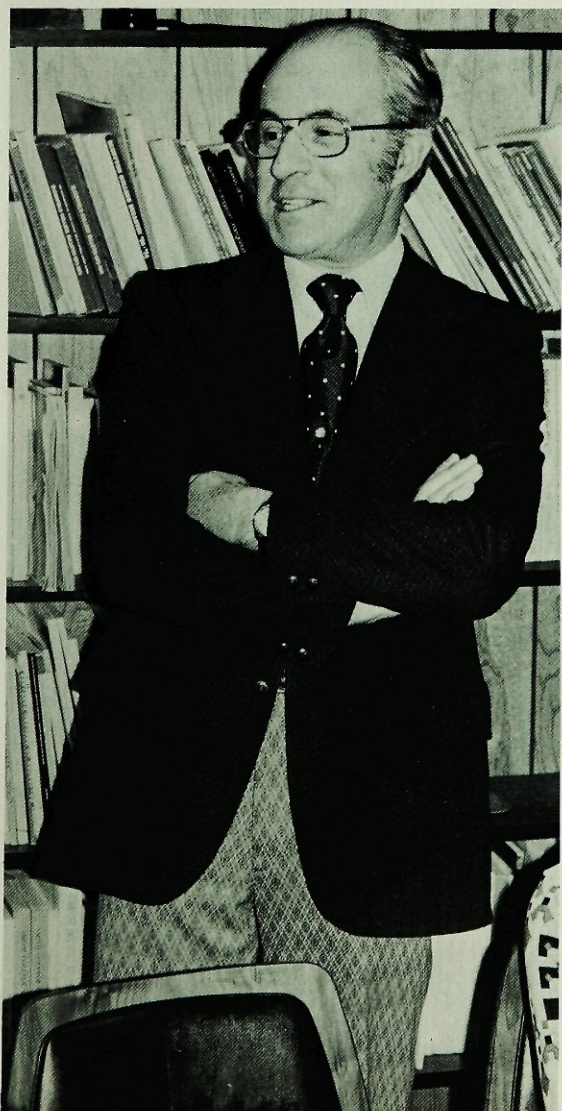


The endless paperwork connected with the Guidance Office. Louis Prisko.



GUIDANCE DEPARTMENT

Establishing a personal relationship with students and helping them to realize their talents and abilities are the goals of the Guidance Department. Guidance counselors aid sophomores in adjusting to a high school atmosphere and lend assistance to upperclassmen in choosing a college and in the search for a future career. The Guidance Department sponsors events such as College Night and Sophomore and Junior Parents Nights in order to assist students and their parents in making decisions for their post high school plans. College representatives hold group discussions giving students the opportunity to ask questions about colleges. By giving encouragement and displaying a genuine concern for individual needs, the Guidance Department continues to be an important asset to S.P.F.H.S.



"So, you think you can get into Yale." Melvin Farber.



Always willing to listen. George Bryan.