



**KARLA LOUISE ANGLE**

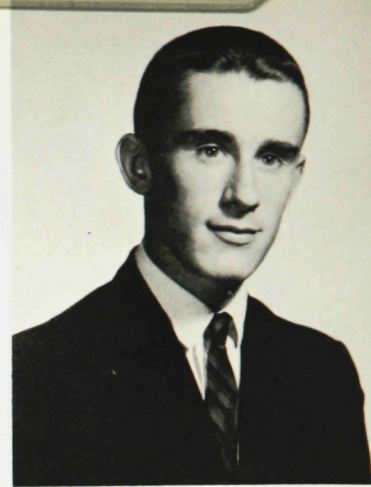
1173 Tanglewood Lane, Scotch Plains  
Fashion Club, Treasurer; CULMEN;  
School Spirit Committee; Pep Club;  
Library Council; Art Club; Junior  
Prom Committee; Junior Play Com-  
mittee; Hostess Club.

"Angle" . . . always a friendly smile  
. . . "Gees" . . . secretary of Church  
Fellowship . . . unique clothes . . .  
sewing, horseback riding, and swim-  
ming top her list . . . talented piano  
player . . . dislikes unfriendly peo-  
ple . . . full of school spirit . . . al-  
ways willing to help . . . pizza lover  
. . . she's fun to surprise . . . bowl-  
ing league . . . adds sparkle to any  
group . . . bright future in college.

**GEORGE ANTONAK**

2348 Mountain Ave., Scotch Plains  
National Honor Society; Varsity Cross-  
Country, Co-Captain; Varsity Indoor  
Track; Varsity Track; Key Club, Vice  
President; Biology Club; Latin Club;  
Library Council, Treasurer; "80-12"  
Club, President; Safety Warden.

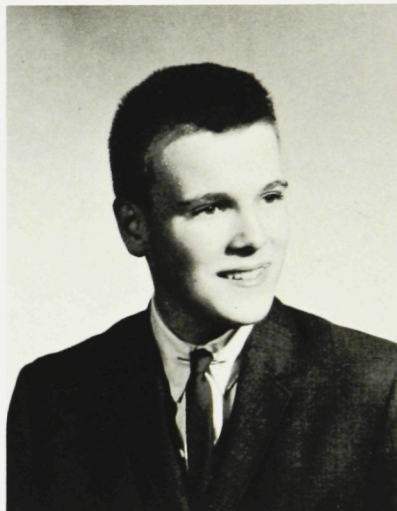
"Light-Bulb" . . . steak eater . . .  
track practice and homework rate  
low . . . crew cut . . . track star . . .  
"80-12" . . . golfer . . . sports car  
enthusiast . . . enjoys music . . .  
those Key Club trips! . . . depend-  
able student . . . a future in the  
field of engineering.



**NANCY S. APSLEY**

2332 Coles Ave., Scotch Plains

"Little Nance" . . . "Hey you" . . .  
drives a beautiful Cadillac . . . water  
skier . . . certain boy . . . always on  
the go . . . goes for Italian food . . .  
neat dresser . . . short, but good  
things come in small packages . . .  
will have a successful career as  
beautician.

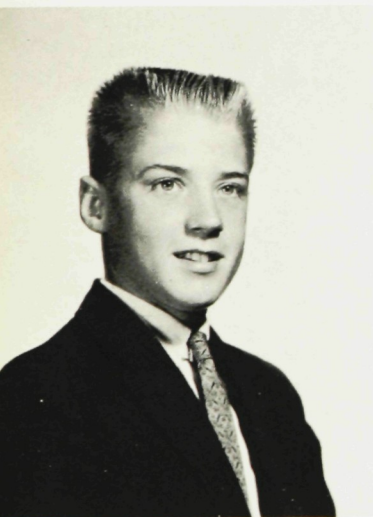


**DOUGLAS ARNESON**

159 Vinton Circle, Fanwood

Debate Club; Moonglowers; Chess  
Club; Wrestling; Tennis; Track; Golf;  
Jr. Prom Committee; Chemistry Club.

"Doug" . . . pizza eater . . . quiet,  
you say? Just wait! . . . football fan  
. . . known by his trombone  
plays guitar . . . sports lover . . . a  
talker . . . "Yeh" . . . short blond  
hair . . . a Moonglower . . . future  
undecided.



**JACK L. ARNESEN**

2296 Concord Road, Scotch Plains

Golf Team, Capt.; Wrestling; J.V. &  
Varsity Soccer; Key Club; Projection  
Squad; Gym Club; Varsity Football  
Manager.

"Jack" . . . blond hair, blue eyes  
. . . banjo plucker . . . keen sense  
of humor . . . golfer who doesn't  
like his slices . . . meatball sand-  
wiches and Italian food are his fa-  
vorites . . . "Take a break" . . . en-  
joys girls and that '56 Ford—that  
order . . . a true friend—liked by all  
. . . real talker . . . good looks and  
a personality to match . . . college  
in the South

**MITCHELL L. ARNOLD**

7 Saville Row, Fanwood

Chess Club; J.V. Wrestling; J.V.  
Track.

"Hawkman" . . . a shrimp eater . . .  
"When do we eat?" . . . wrestling  
fan . . . dislikes homework . . . arch-  
ery, bowling, horseshoes, wood car-  
ving, and gymnastics are a few of his  
favorites . . . blows away at the  
trumpet—a drummer, too . . . col-  
lege in the future.



**EDWINA ASCHENBACH**

2045 Westfield Ave., Scotch Plains

"Petie" . . . enjoys sewing and is  
good at it . . . "Oh, really"  
enjoys Italian foods . . . a certain  
boy . . . a swimmer . . . does she  
or doesn't she? . . . a sense of hu-  
mor pervades . . . plans to attend  
business school.



**TOM ATHEY**

206 Martine Ave., Fanwood

Freshman Football; Indoor and Out-  
door Track.

"Ace" . . . track star . . . dislikes  
cliques . . . fried chicken fan  
"I doubt it" . . . hobbies seem to  
center around girls . . . enjoys sports  
and cars . . . works in First National  
. . . a real talker at times . . . short  
black hair . . . a sense of humor . . .  
college in the future.