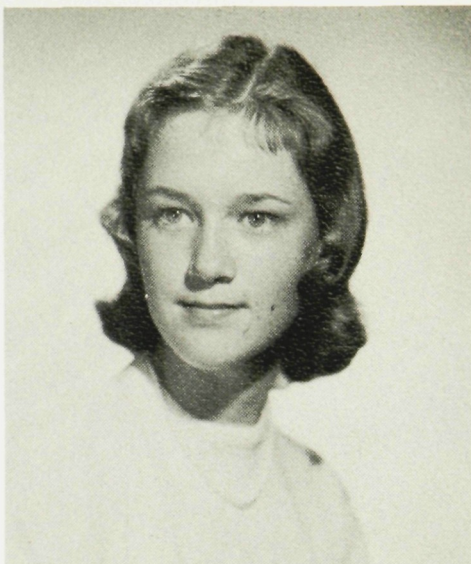




**SONDRA ANN AUSTIN**

Business Education Club.

A smile is a mark of friendliness . . . ardent distaste for homework . . . just loves plain "fun" . . . suffers from "stenoitis" . . . golden curls . . . "a thimbleful of laughter" . . . swimming parties in her own pool . . . fond of white convertibles . . . secretarial school . . . "Sondy".



**JUDITH KAREN BABCOCK**

Student Council; Band; Orchestra; Senior Chorus; Las Con.; G.A.A.; Leader's Club; Jr. Play Committee; F.T.A.; G.A.C.; Girls' Citizenship Institute.

A half pint always on the go . . . cheerful chatter . . . perpetual hic-coughs . . . full of spark . . . flare for mischief . . . flutist in band . . . always has a smile for everyone . . . fun to be with . . . University of Colorado in future? . . . "Judy".



**CAROLYN THERESE MARTHA BACZYNSKI**

CULMEN; Student Council; National Honor Society; Publicity Committee; Business Ed. Club; Twirlers; Las Con.; Senior Chorus, Secretary; G.A.C.; Jr. Prom Committee; Jr. Play Committee; Fancotian; Girls' Volleyball; Swimming.

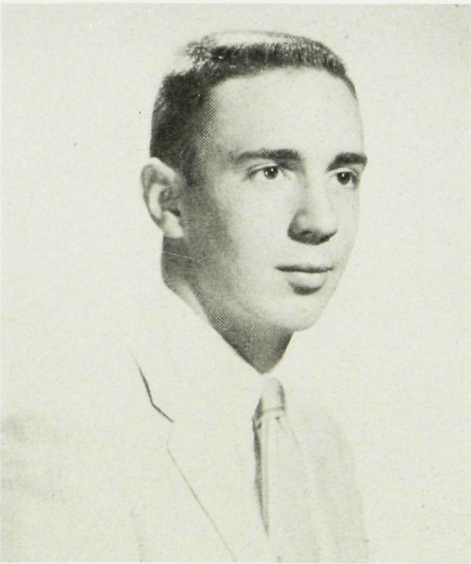
Twinkling eyes with a smile to match . . . famous for her bogiewogie piano . . . "Don't panic" . . . talented in art . . . staunch advocate of Pennsylvania . . . valuable asset to the twirling squad . . . sincere . . . latest trend in clothes . . . "That's stunning" . . . "Carrie".



**ELLEN BAKER**

Debate Club.

Works hard at everything she does . . . warmth and generosity . . . likes math and sports . . . good listener . . . courteous and helpful . . . came from Rochester in her junior year . . . unperturbed in any situation . . . independent thinker . . . enjoys people . . . college is ahead . . . "Ellen".



**LOWELL BALLINGER**

Student Council; National Honor Society; Sr. Executive Board; French Club, Vice-President; Math Club; Intramurals; Boy's State; Varsity Football; Track manager; Junior Play; Chemistry Club.

Many friends . . . letterman at the end slot . . . nonchalant . . . "Sure, go away" . . . tops scholastically . . . timely wisecracks . . . rarely worries . . . always willing to help some lady . . . a sincere friend . . . sees things through . . . 1948 Packard for \$35.00 . . . dry humor . . . future engineer . . . "Lowie".



**CAROL KAY BELLAMY**

Student Council; CULMEN; Service Club; Fancotian; Library Council; Debate Club; F.N.A., Treasurer-President; Girls' Leaders Club; Senior Chorus; G.A.C.; Junior Play; Chemistry Club; Dramatic Club; Jr. Prom Committee; Soph. Hop Committee.

Peppy, cheerful, and witty . . . great sense of humor . . . some of those slumber parties! . . . "Belleminy" . . . versatile . . . a real worker . . . "Fuernick" . . . where's the Mutual boss? . . . full of spirit . . . thoughtful and considerate . . . "comment allez-vous?" . . . going into social work . . . "Carol".