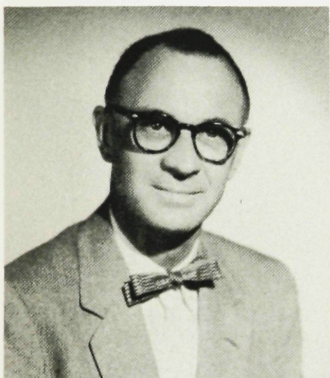


you have not imparted it to others."

—MIDRASH



MR. ROBERT E. SMITH

Columbia, A.B.  
Rutgers, Ed.M.

Director of Guidance

A twinkle in his eyes . . . admired for his honesty and frankness . . . enjoys hunting and fishing . . . likes people and conversation . . . interested listener.



MRS. JULIA P. STERLING

Bloomsburg  
State Teachers College, B.S.  
Temple University, M.S.  
Lehigh University Graduate School

Elementary Business Training,  
Consumers Education, Economics

"What is your opinion?" . . . dislikes prevaricators . . . new faculty member . . . good discussion leader in economics . . . patient . . . fond of hiking, reading, and gardening.

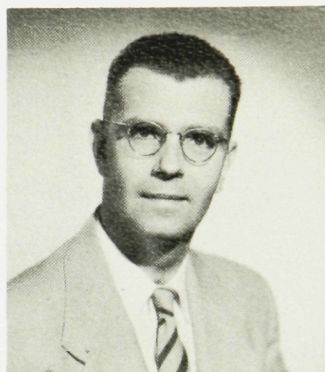


MRS. ISABEL M. TURNER

University of Colorado, B.A.

Library Secretary

A world without books wouldn't be a world . . . likes polite young people . . . enjoys cooking for large groups . . . a helping hand . . . "camping trips are for me."



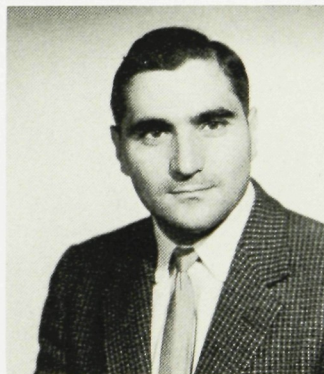
MR. EDWARD J. STOLT

Montclair State College, B.A., M.A.

Biology and Human Biology  
Biology and  
Advanced Biology Clubs

A handy man with wood . . . lec-

tures always precede lab work . . . rarely wanders off the subject . . . finds reptiles interesting enough to study . . . reserved, with glimmer of humor.

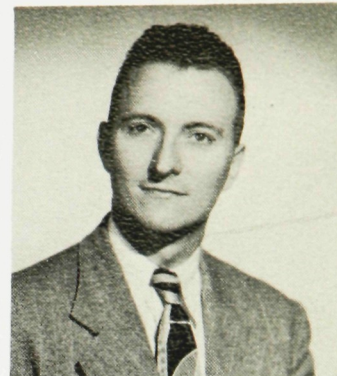


MR. FRANK A. VOLPE

Seton Hall University, B.S.  
New York University, M.A.

Professional Diploma  
U.S. History I and II

Chess Club, Track, Cross Country  
"Let's have your attention" . . . for democracy in the classroom . . . '57 Ford convertible . . . tells of Army experiences . . . once mayor of a German town . . . recently married.

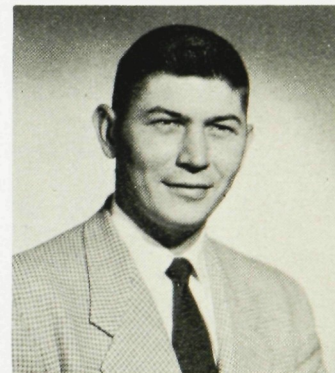


MR. ROBERT E. TILLEY

Bowdoin College  
Montclair State College, B.A., M.A.  
Rutgers University—Sixth Year

Chemistry, Physics  
Advanced Chemistry Club

Little "opportunities" . . . those crazy people who invented the English measuring system . . . "Physics is fun!" . . . happy atoms . . . hi-fi fan . . . putters around the garden.

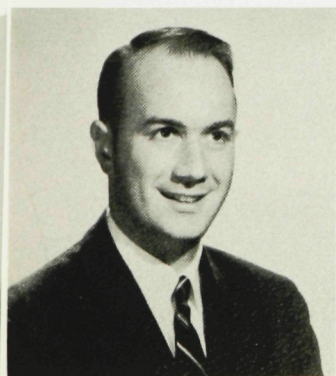


MR. LEONARD ZANOWICZ

Mansfield  
State Teachers College, B.S.

General Math I, Algebra I  
Baseball Coach, Line Coach

Likes good food . . . baseball and football . . . "You think you're funny" . . . matman . . . fools with brush and easel . . . amiable . . . two little sluggers.



MR. GEORGE F. TOWNE

University of Rochester, B.S.

Algebra I and II, General Math II

Hard tests and lots of homework . . . likes singing, reading, and swimming . . . "all right" . . . three years in the U.S. Navy as Lieutenant, J.G.