

and gladly teach."

—CHAUCER

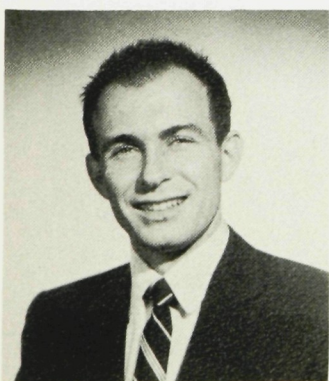


MR. JOSEPH R. FRONCEK

Bloomsburg  
State Teachers College, B.S.  
Pennsylvania State University, M.Ed.

Science Club

Striking resemblance to Clark Kent  
loathes seeing girls chew gum  
an avid collector of stamps  
can take a joke  
spends afternoons with Science Club.



MR. JOHN R. HERBERT

Newark State College, B.S.  
Rutgers University, M.Ed.

Industrial Arts  
Stage Crew

A friend to all . . . likes handling airplanes and planing handles . . . likes to chase a little white ball around the golf course.



MISS MARY A. GALT

Rutgers University, B.S., Ed.M.

Guidance

Guidance Counselor and friend . . . ubiquitous, peripatetic and peregrina apply . . . likes music and sewing . . . "You'll never get to college, unless . . ."

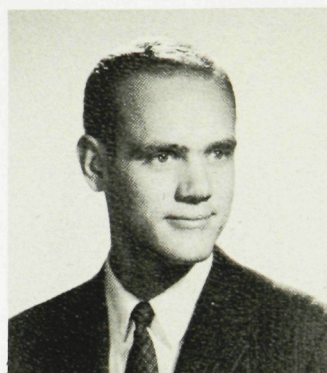


MR. WALTER E. HELLER

Bloomsburg  
State Teachers College, B.S.

Algebra I and II  
Freshman Math Club

"We'll have a quiz sometime in the near future" . . . enjoys food, music, and travel . . . plays softball . . . dislikes interruptions . . . calm, collected, and rather quiet.

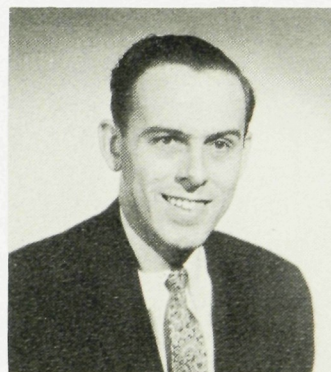


MR. HOWARD F. GLEIM

Pennsylvania State University, B.S.

Algebra I and Plane Geometry  
Sophomore Math Club

Hard working . . . sportsman at heart . . . likes basketball, golf, hunting, and fishing . . . enjoys "good" novels . . . definite ideas on many subjects . . . always smiling.



MR. RICHARD J. HERRICK

Montclair State College, B.A., M.A.  
New York University

English II and IV  
Culmen

Favorite students are Barbara and Marian, ages three and one . . . master of the corny wisecrack . . . well liked . . . individualist . . . fine mixture of seriousness and fun.



MR. JAMES M. GUSTAVE

Bloomsburg  
State Teachers College, B.S. in Ed.

English I and II  
Wrestling

His own brand of humor . . . an enthusiastic sportsman . . . works hard at everything he does . . . interests include sports, reading, and music . . . firm convictions.



MISS EDITH M. HIGGINS

New York  
State College for Teachers, B.A.  
Teacher's College  
Columbia University, M.A.

English IV  
Chairman of Senior Advisors

"Oral, gaseous, clique" . . . extremely patient . . . inclined toward dramatics and direction of amateur thespians . . . possesses tact and graciousness . . . an "A" must be earned.