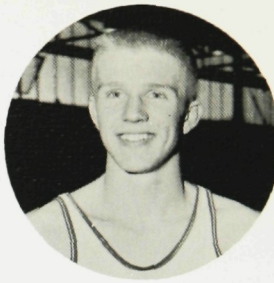
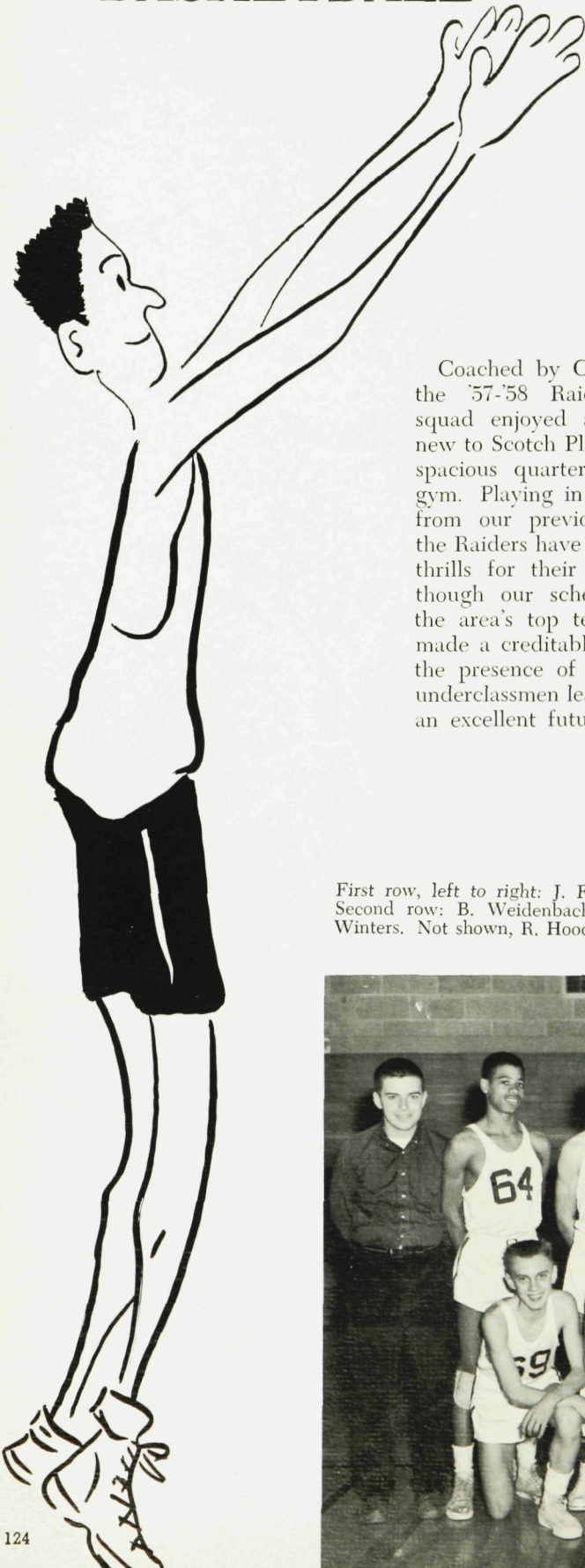
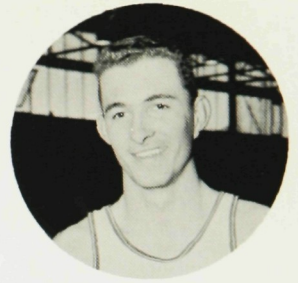


# BASKETBALL



BOB TRUITT



GARRY WILBOR

Coached by Chuck Dettmar, the '57-'58 Raider basketball squad enjoyed a thing brand new to Scotch Plains cagers, the spacious quarters of our new gym. Playing in this departure from our previous "bandbox" the Raiders have provided many thrills for their followers. Although our schedule included the area's top teams, the boys made a creditable showing and the presence of a fine crop of underclassmen leaves promise of an excellent future.

## SCORES

S.P.F.		Opp.
83	Manville	58
63	Cranford	80
59	Metuchen	61
37	Westfield	48
87	Dunellen	65
59	Clark Regional	40
75	Roselle Park	74
63	Roselle	74
85	Metuchen	86
67	Roselle	76
80	Cranford	90
72	Hillside	65
71	Dunellen	51
68	Clark Regional	63
55	Manville	59
55	Springfield	51
79	Roselle Park	65
80	Hillside	77
<i>County Tournament</i>		
48	Roselle Park	58

First row, left to right: J. Ferrara, J. Short, J. Scarpati, J. Fischer, E. Donovan, B. Alexy. Second row: B. Weidenbacher, L. Gonzalez, J. Tudor, S. Smith, B. Born, A. Levett, A. Winters. Not shown, R. Hood.

