



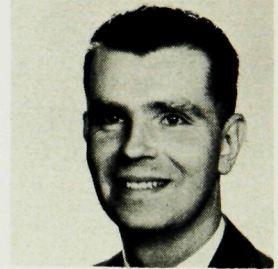
EDITH L. PITCHER  
Smith College, B.A.  
Middlebury College, M.A.



HAZEL STOCKER  
University of Pennsylvania,  
B.S.  
Columbia University, M.A.



LOUIS PRISNOCK  
Muhlenburg College, B.A.



EDWARD J. STOLT  
Montclair State Teachers  
College, B.S.



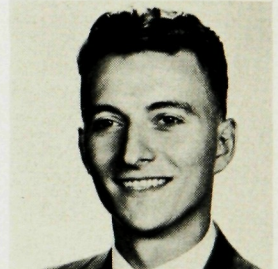
ALFRED RAHN  
Ursinus College, B.S.  
Temple University, Ed. M.



RUTH K. SWETLAND  
Wellesley College, B.A.  
Columbia University, M.A.  
Professional Diploma



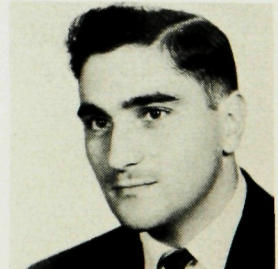
DOROTHY M. ROBERTS  
Indiana State Teachers Col-  
lege, B.S. in Ed.  
University of Pittsburgh,  
Ed. M.



ROBERT E. TILLEY  
Bowdoin College  
Montclair State Teachers  
College, B.A.



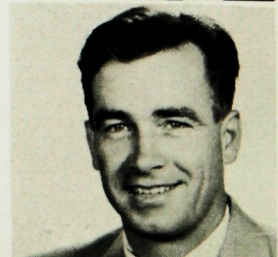
WENONA RUSSO  
University of Missouri, B.S.  
in Ed., M. of Ed.



FRANK A. VOLPE  
Seton Hall University, B.S.  
New York University, M.A.



ROBERT E. SMITH  
Columbia University, A.B.  
Rutgers University, Ed. M.



EDWARD  
WOJNAROWSKI  
Trenton State Teachers  
College, B.S. in Music