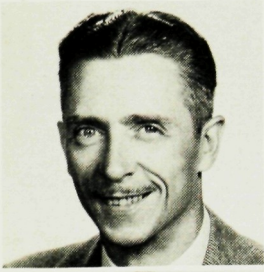


FACULTY



HARRY L. ADKINS, Jr.
Temple University, B.S. in Commerce

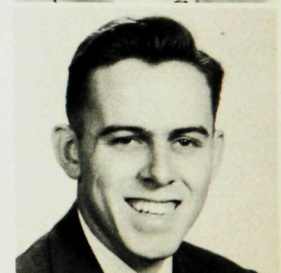
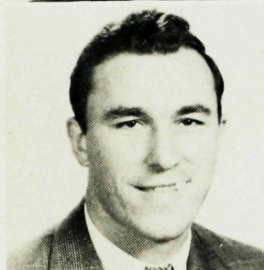
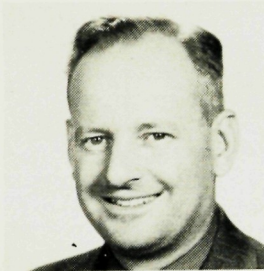
A. LORAIN AYERS
Rutgers University, B.A., Ed.M.

RAYMOND CALLAGHAN
Ithaca College, B.S. in Physical Education

CHARLES DETTMAR
Trenton State Teachers College, B.S.

MARGARET B. EHMANN
Winthrop College, B.S. in Home Economics

RHONA L. FRIEND
Ursinus College, B.S.
Columbia University, M.S.



MARY A. GALT
Rutgers University, B.S., Ed.M.

VERNE B. HENRY
University of Alabama, B.S.
Columbia University, M.A.

JOHN R. HERBERT
Newark State Teachers College, B.S.

RICHARD J. HERRICK
Montclair State Teachers College, B.S.

RICHARD C. HESS
State Teachers College, Bloomsburg, Pa., B.S.