

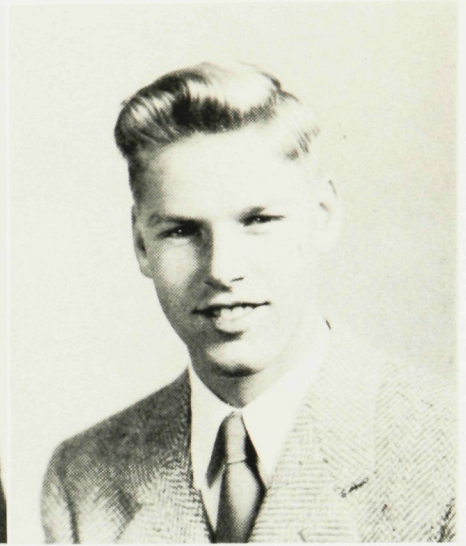
# CLASS OF 1950



**JUNE MARY HART**

Girls' A. A.; Fanscotian; Commercial Club; Culmen.

A truly pretty girl is soft-spoken June who can be counted on to be the life of any party. Serving as Mr. Burd's secretary for two years she has done outstanding work. June says her favorite hobby is "driving my little Model A." For the future she hopes to go into the secretarial field in which we know she will be successful.



**ROGER WELDON HATFIELD**

Service Club; Spanish Club; Student Council; Basketball.

A familiar figure in the halls at school is sandy-haired Rog. A whiz at basketball and ping-pong, he'll be remembered for his unique sense of humor. Roger has lots of friends and it's easy to see why. He's one senior we won't forget.

**BERTHA JOAN HENRI**

Girls' Chorus.

Bertha is the one member of our class who is yet to be seen without a smile. She never fails to greet everyone in this happy manner. She enjoys music, and plays the piano as well as sings in chorus. When she leaves school, Bertha would like to enter the field of private nursing.

**DOROTHEA DORINE HOOPER**

Girls' Chorus; Spanish Club; Service Club.

Tall, dark, and friendly Dot returned to good old S.P.H.S. in January of her senior year after a half-year in Michigan. Vaughn Monroe ranks high with Dot. Believe it or not this gal is crazy about History Class. Her college plans are undecided but she would like to teach history.

