

GERTRUDE M. TRAXLER

Gert

And now we present the other half of the Schaffernoth-Traxler duo; cheerful, popular *Gert*. This senior girl listed her hobby as collecting match covers, very enjoyable pastime. *Gert* is not entirely decided what field she would like to enter after that June milestone is past, but she feels she might like to become a hair stylist.

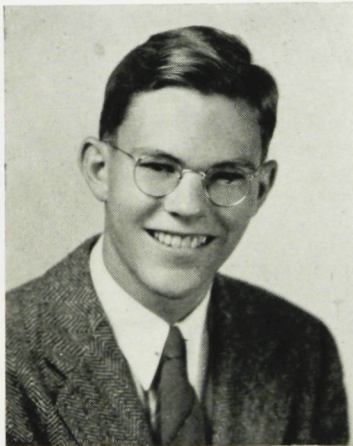


CHARLES TULLO

Chas

General Manager of Track and Football

Dark-haired *Chas* is truly an outdoor man. Loving sports, he is happiest in the autumn with a gun under his arm or a rod and reel on the first day of fishing season. His quiet, unassuming manner has made itself felt in his devotion to the various school teams. As *Chas* is gifted mechanically, he hopes for a career in diesel mechanics and plans to direct his further study to this end.



WAYNE TURNER

Culmen Business Manager, Track, Student Council, Band, Orchestra, Junior Play, Science Club, Boys' A.A., Varsity Club, Service Club, President of Phi Sigma, Senior Play

Tall, pleasant and dependable Wayne is not only an honor student but a musician and athlete as well. He came to S.P.H.S. as a freshman and has figured prominently in school affairs ever since. This year he has done a grand job as the Culmen's competent business manager. Scientifically-minded, Wayne wants to study chemical engineering, but isn't sure what school he will attend.



ENOCH S. VAN HEUSEN

Shorty

Spanish Club, Boys' A.A., Basketball, General Manager of Athletics

Tall, good-humored Enoch has always been a well-liked member of the senior class. He has taken an important part in school athletic activities as general manager and his aid has been invaluable. Enoch wishes to attend college after graduation and hopes to become a custom broker.