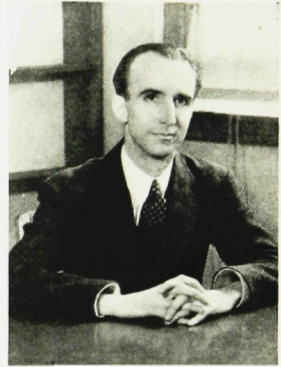


Forty - Two

HENRY S. GUTKNECHT

Science

B. Sc., PENNSYLVANIA STATE TEACHERS
COLLEGE, SHIPPENSBURG
M. Sc., CORNELL UNIVERSITY



HELEN R. GUTKNECHT

Commercial

B. Sc., RIDER COLLEGE



REVA PAYNE JOHNSON

English

B. A., COLLEGE OF WILLIAM AND MARY