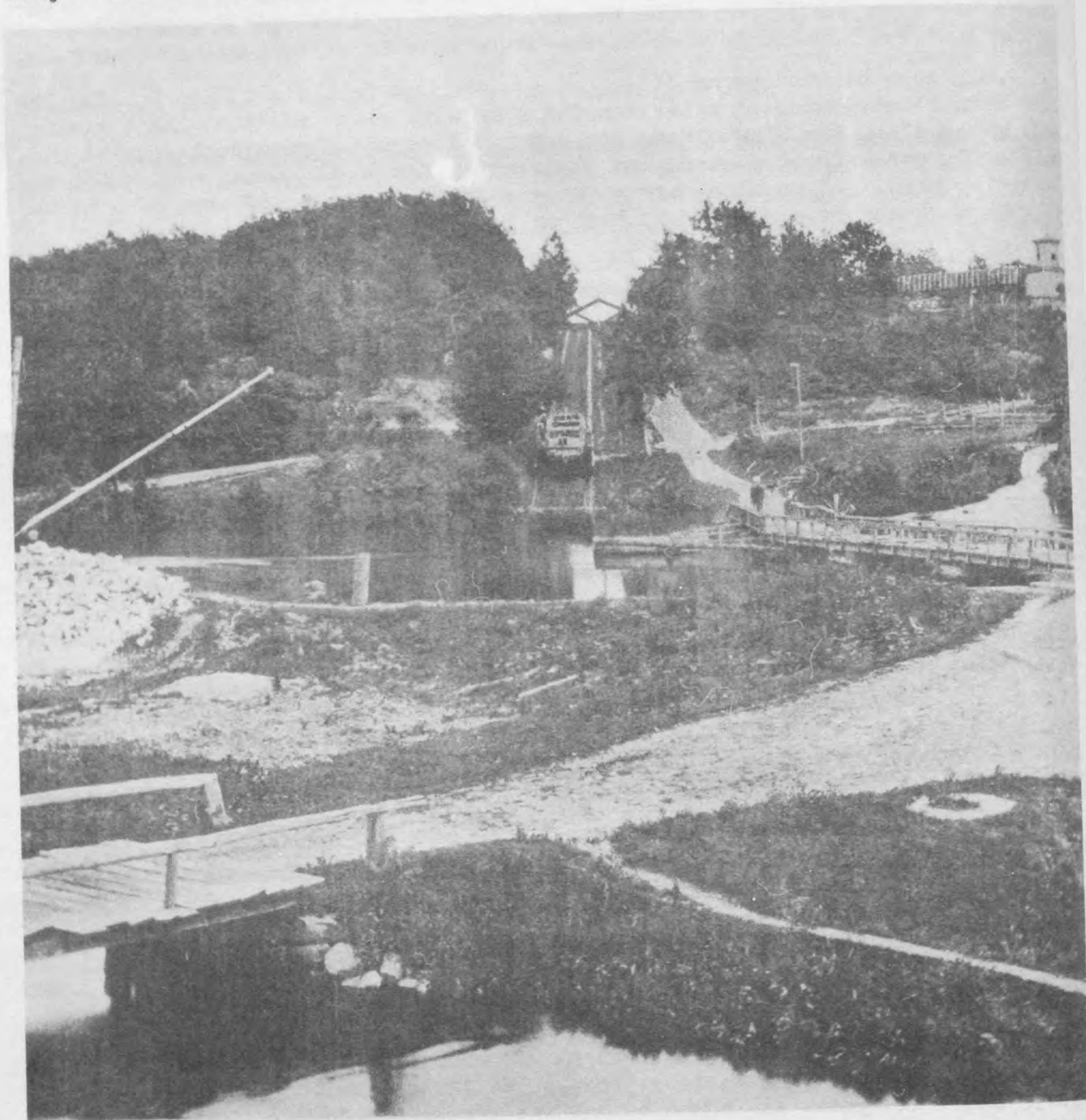


STORIES of New Jersey

Although it was foredoomed to financial failure and decay, the new waterway brought prosperity to the adjoining country during its comparatively brief existence. Before the barges came with coal from the Pennsylvania mines, Boonton was a village with grass-grown streets. It sprang into life with a blast furnace, four forges and a mill for manufacturing iron sheets. The machinery and expert workers were brought from England and soon 200 people were employed by the East Jersey Iron Manufacturing Company. Forges and iron works flourished throughout the northern part of the State. Little towns such as Port Murray, Port Colden, Pequannock, Pompton and Rockaway were developed. The canal proved an industrial godsend to Newark, where factories eagerly awaited cheap coal. The city doubled its population between 1830 and 1835.



A Barge Goes Over the Mountain on a Plane