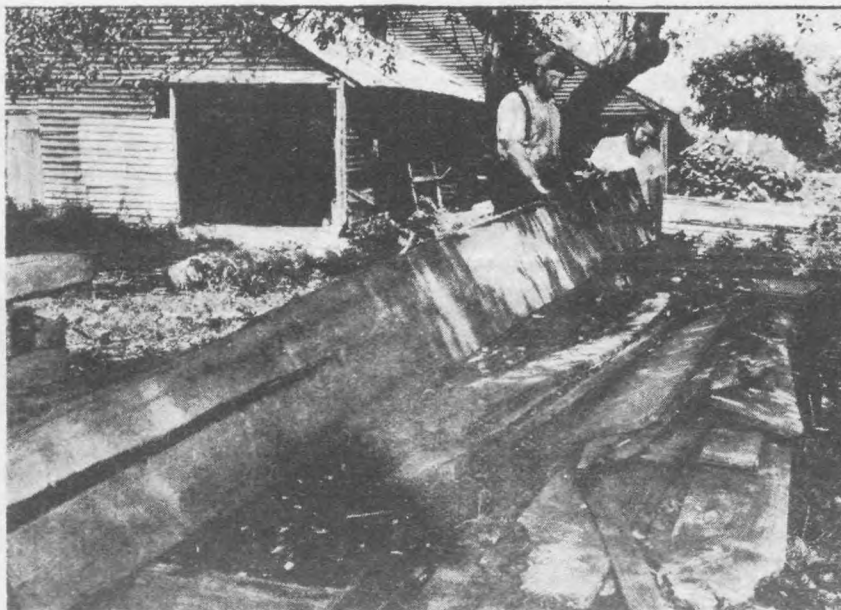


STORIES of New Jersey

lengths are kept for use in boatbuilding.

Because of the inaccessibility of the swamplands and the difficulty and expense of extracting the logs from their ancient burial place, it is not likely that cedar mining will ever be a major industry. But those who have made use of this prehistoric cedar value it for its lasting quality. About 30 years ago 25,000 shingles of Cape May County cedar were used to reshingle the roof of Independence Hall in Philadelphia.



Long Cedar Planks Cut for Boatbuilding

Courtesy Wide World Photos