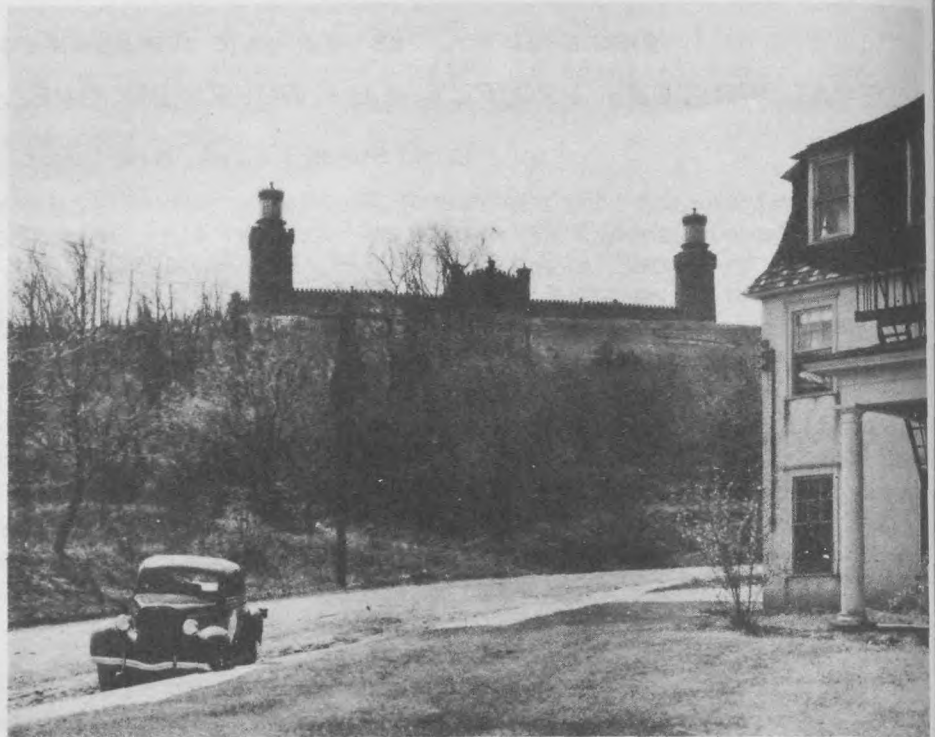


One of the first agencies established by the Congress of the United States in 1789 was the Lighthouse Service. At that time there were twelve lighthouses in operation. The Sandy Hook tower was one; nine were in New England waters; one was at Cape Henlopen in Delaware and one at Charleston, S.C.

In 1903 lighthouse work was placed under the Department of Commerce and in 1910 the present Bureau of Light-



Navesink Lighthouse Highlands View

houses was created under the same Department to direct the establishment, construction, maintenance and operation of all lighthouses, lightships, buoys, markers and other navigation aids on the 40,000 miles of seacoast, the Great Lakes and navigable rivers of the country. Supervision is divided among seventeen districts with a personnel of 5,050 employees, 42 of whom are employed in the Bureau at Washington. The seacoast of New Jersey lies in the Third District, which includes the waters of Rhode Island (excepting Narragansett Bay), Connecticut, New York and New Jersey, with headquarters at Staten Island. The Delaware Bay and River waters are under the Fourth District, with headquarters in Philadelphia.

Lighthouses placed on exposed points of land or shifting shoals are at the mercy of the very dangers they are set to guard. There have been many instances of lighthouses being literally washed into the sea as their foundations crumbled under the attack of the waves. Problems of wind and wave resistance command constant study, and there are many lighthouses that are famous for the skill employed in their design and construction.

The Brandywine Shoal Lighthouse, erected in 1914 eight miles from the entrance of Delaware Bay, marks a dangerous shoal where two lighthouses have succumbed to the pounding of the waves and the grinding of the ice. For years the spot was marked by a lightship. The abandoned lighthouse is still standing close to the new one. A 225-ton reinforced concrete pier forms the foundation for the circular concrete dwelling. The beacon itself stands at the center of a group of nine iron legs. Surrounding the entire structure are 30 heavy iron