

RECREATION

When it's time to relax, what do you prefer? Bowling? Golf? Tennis? Softball? No matter what it is, the chances are that your favorite recreation can be pursued almost in your own neighborhood, whether it be picnicking, nature walks or fishing.

The Union County Park Commission provides a variety of activities in the Scotch Plains area of the Watchung Reservation. Its facilities include a bocce court, a fishing area, football field, four horseshoe courts, a playground, four quoits courts, shuffleboard, softball field and a tennis court.

The Reservation is a 2,000-acre wooded tract in the Watchung Mountains. The Scotch Plains area is in its extreme southwest corner, just off Highway 22 and Park Avenue.

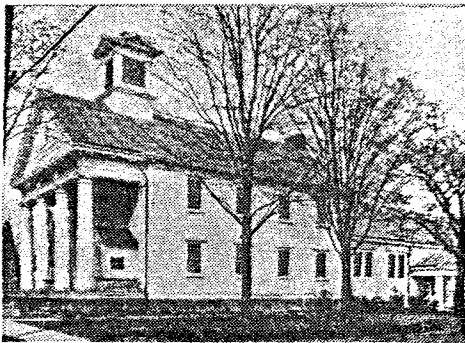
There are two public golf courses in the Scotch Plains area. Netherwood is a nine-hole course and Ashbrook Reservation an 18-hole course. The 18-hole Shackamaxon course is a private one and the Shady Rest Country Club has a course for members of the Negro club.

For devotees of miniature golf there are courses at Bowcraft, on Route 22, and one at Front and Valley Streets.

Boating and canoeing are available at Lake Surprise in Watchung Reservation, Echo Lake Park and Bowcraft. In the winter, these three sites offer ice skating.

There is a tennis court in the county park, and archery is an activity at Bowcraft.

Ray's Sport Shop on Route 22 provides an indoor pistol and rifle range.



Y. M. C. A.

JOHN R. REYNOLDS

PLUMBING AND HEATING CONTRACTOR

2281 Coles Avenue, Scotch Plains

FAnwood 2-7871
