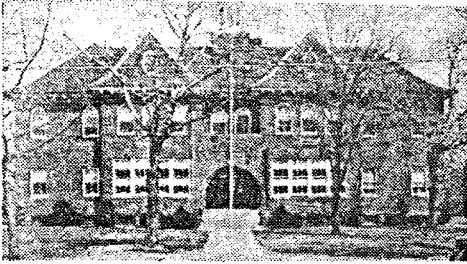
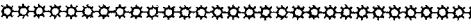


School No. 1 on Park Avenue is on a site of more than two acres.



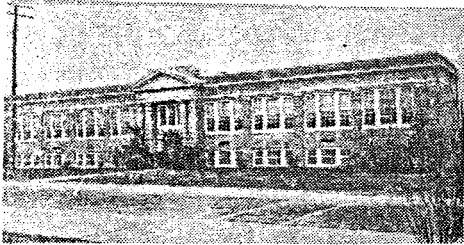
SCHOOL No. 1

It replaced a previously ancient structure, which had been the old Baptist Church, in 1890. Plans for the building were drawn by the architectural firm of which the famous Stanford White was a member. It was a two-story building containing five rooms, an auditorium and a principal's office. With the growth of the community, additions were made in 1909 and 1917.

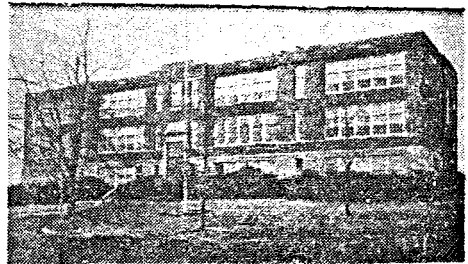


School 3, on a site of less than an acre, was erected in 1915. The present modern addition was constructed in 1922.

In 1922, School 4 joined the growing educational system. On La-Grande Avenue in Fanwood, it has a site of two and three-quarter acres. Its addition was built in 1930, bringing its total classrooms to 16.



SCHOOL No. 3



SCHOOL No. 4

SHOP-RITE

SUPERMARKET

377 Park Avenue

Scotch Plains
