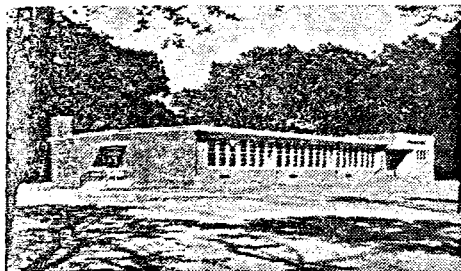


The five elementary schools are scattered throughout the district, so that a large majority of the pupils are within walking distance of their classes. There are school buses where required.

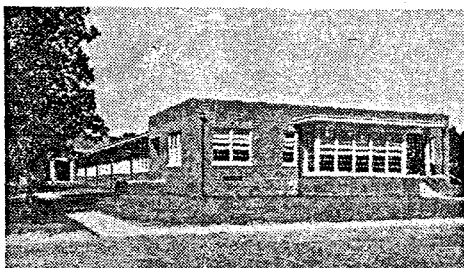
Education in Scotch Plains goes back to 1768 when the Baptist Church established a private school (\$1.87½ per quarter). In the early Nineteenth Century the town took over the operation of the school.

The high school was built on Park Avenue, Scotch Plains, in 1925. It is evaluated by the Middle States Association of Colleges and Secondary Schools and is fully accredited by all college certifying agencies. Graduates who have maintained satisfactory grades have no difficulty obtaining admission to higher institutions. The high school also offers commercial, shop and trade courses. An all-around sports program is maintained, for the school site contains seven acres for playground purposes and includes a baseball diamond and a football field with movable bleachers.

The two newest schools in the district opened their doors in the fall of 1952. They are the Shackamaxon School on Martine Avenue between West Broad and Cooper Streets, and the Evergreen School on Evergreen Avenue just off Westfield Road. Both schools with additions cost about \$1,000,000. The one-story brick and concrete buildings are modern and functional in design, and are both on ten-acre plots.



SHACKAMAXON



EVERGREEN

The additions to Shackamaxon and Evergreen Schools provide complete facilities of adequate classrooms, kindergarten rooms and all-purpose rooms containing stages.

The most modern equipment, with an eye to health and beauty, has been used.

VISWAT'S DAIRY

WE DELIVER IN SCOTCH PLAINS

1008 South Avenue, Westfield

Westfield 2-0620
