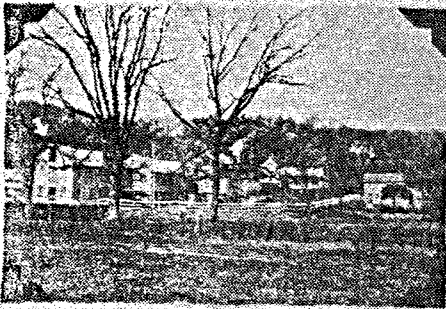
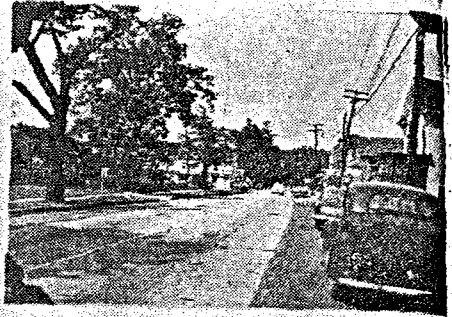
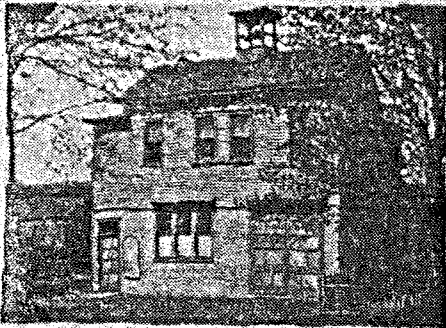
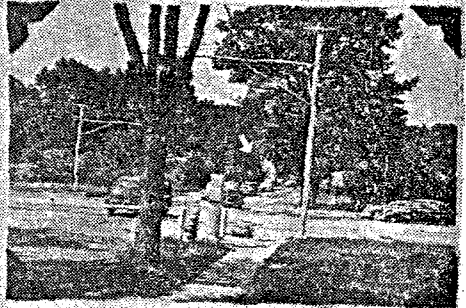


SCOTCH PLAINS THEN andNOW

Looking north on Park Avenue
about 1899. The same street
today.



Looking from Park Avenue
across what is now Highway 22
towards the fur mill, the
mill building, still stand-
ing, is indicated by arrows
in both pictures.



Excelsior Hook and Ladder
Co. #1 in 1895. The Public
Library now occupies the
site.

