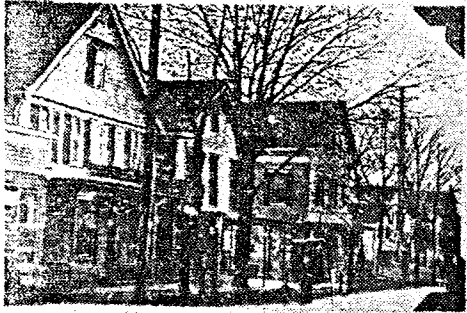


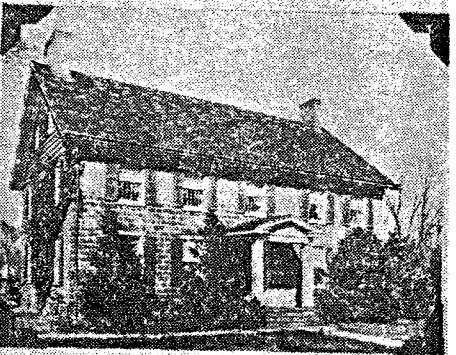
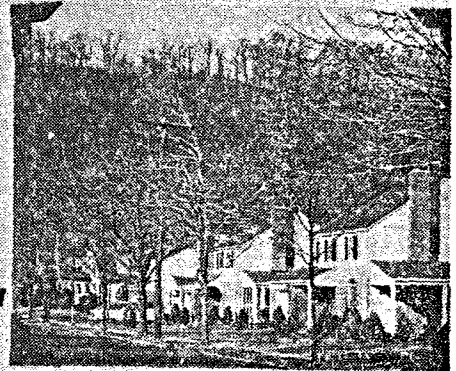
SCOTCH PLAINS THEN andNOW



Looking south at Park Avenue near Bartle about 1900. The three story building at the left was the town's hotel. The same view in 1953. ↓



↑ Looking from what is now Mountain Avenue and Katherine Street, towards the Watchungs in 1918. The young lady would be lying in middle of a built up residential area were the picture taken today.



↑ The Baptist Church Parsonage prior to 1866 and as it looks in 1953.