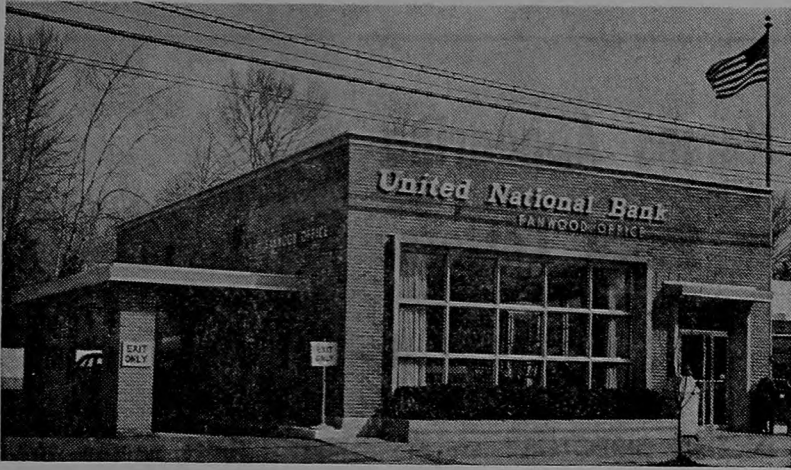


YOUR HEADQUARTERS FOR FULL-SERVICE BANKING IN THE FANWOOD-SCOTCH PLAINS AREA



- Open 7:30 a.m.—2:00 p.m. Mon.-Fri.
- Open 6-8 p.m. Thursday
- Two drive-in banking windows
- Free off-street parking
- Round-the-clock depository service
- Total assets \$144,000,000



United National Bank

OF CENTRAL JERSEY
Formerly Plainfield Trust State National Bank

FANWOOD OFFICE
45 Martine Avenue South, Fanwood
Member Federal Deposit Insurance Corporation