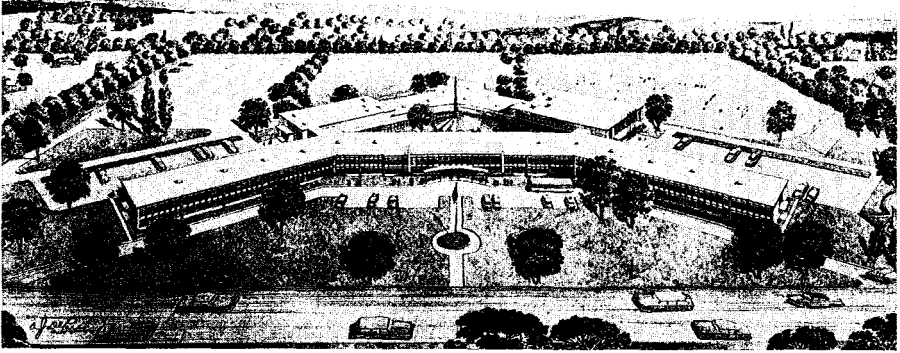


Parochial Schools



UNION COUNTY CATHOLIC HIGH SCHOOL 1600 Martine Avenue, Scotch Plains, 889-1600

The Union County Catholic High School being constructed on a 20-acre site on Martine Avenue opened its doors to 290 freshmen students on September 5, 1962.

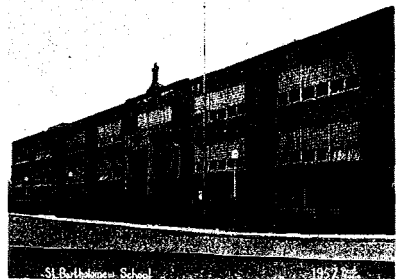
Work continues on the \$3 million structure of colonial rose brick and aqua-green curtain walls. The finished regional school will accommodate 1,500 students and will have two wings with 20 classrooms each, a separate structure for an auditorium and for a gymnasium, a cafeteria, administrative offices as well as residences for instructors.

Of the two residency buildings one will house 25 Dominican Teaching Sisters and the girls' principal, the other will be for the Marist Brothers, the boys' instructors.

Plans call for the addition of one academic class each year until the full 4-year complement is met. Future classes of the co-institutional high school will be drawn from the Southwest Union County area based on competitive examinations to be given each spring.

ST. BARTHOLOMEW THE APOSTLE SCHOOL 2032 Westfield Avenue, Scotch Plains, FA 2-4265

The present day enrollment of St. Bartholomew the Apostle School is 1,325. The fifteen room school opened in September 1950 and a ten room addition was constructed in 1955. It is staffed by 15 Teaching Sisters of St. Lucy Filippini. The school enrollment is comprised of residents of Scotch Plains and Fanwood.



CONFRATERNITY CLASSES

Grades one through eight of the Grammar School are given classes on catechism on Monday afternoons, 3:15 to 4:30. Grades nine through twelve of the High School meets each Monday evening at 7.