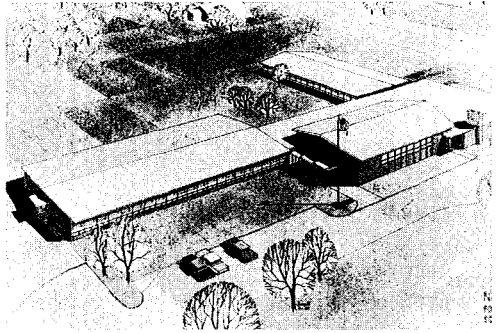


A new 720-pupil elementary school is to be completed during the 1963-64 academic year. Plans include 19 classrooms, 3 kindergarten rooms and an all purpose room with stage. The 10.2-acre site on Kevin Road will give ample play area and room for future additions.



A 1962 study by the Herbert H. Smith Planning Associates indicates a need for a second elementary school by not later than 1965. The study shows that the total school capacity in 1964 will be 4,190 and the student enrollment, based on the "migration ratio," is estimated to be 4,365.

The Parent-Teachers Association is actively functioning in all schools.

ADULT SCHOOL

The Scotch Plains-Fanwood Adult School has been functioning for several years as a non-profit, self-supporting community enterprise under the sponsorship of the Fanwood Lions Club and the Board of Education. Any adult may register for courses with the payment of a nominal fee. In early September a brochure is sent to every home in Scotch Plains and Fanwood listing courses offered in a variety of subjects. Classes are held at the Scotch Plains-Fanwood High School on ten successive Monday nights during the fall and spring.

COUNTY SCHOOL

A County Technical Institute operated by the Board of Freeholders opened its doors in September of 1962. The new colonial one-story building on Park Avenue is a training center for data processing and dental assisting students. The day and evening classes draw students from Union County and environs. County students pay a \$100 tuition per semester while others pay \$300. To qualify for enrollment students must be high school graduates, and have taken subjects appropriate for the program desired. The location of the new institute is considered temporary quarters until the county's technical junior college is completed.

