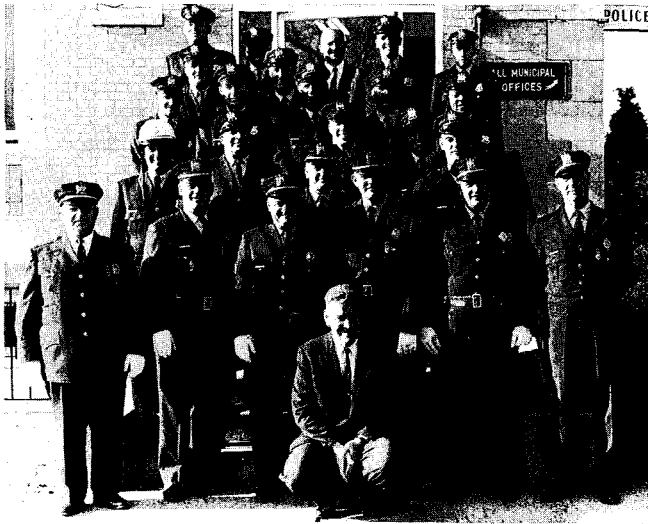


Police Department



One of the basic services of any municipality is police protection. Our Police Force consists of a Police Chief, a Captain, a Lieutenant, five Sergeants, 17 Patrolmen, a Detective, 10 Special officers and 10 school crossing guards.

The Police Force has 4 patrol cars, a radar car, motorcycle, and a scooter, plus special first aid equipment in each vehicle.

In 1961 the Department handled 3,078 calls and complaints, made 52 arrests, recovered \$1,090.88 in stolen property, issued a total of 1,666 summonses and detectives investigated 403 cases.

Scotch Plains is particularly proud of its juvenile delinquency record which in the past years has seen only 90 cases requiring court action. The 90 cases included 25 children from other communities.

An officer is in attendance at all times at Police Headquarters in the Municipal Building on Park Avenue. The radio transmitter at headquarters enables him to be in constant communication with the mobile units in the vehicles. A teletype machine at the office permits direct communication with 16 other states.

CIVIL DEFENSE AND DISASTER CONTROL

An emergency crew of nine specially trained men, the entire police force and nurses in the area stand ready to meet any large scale disaster. A Civil Defense emergency truck is located at the South Side Firehouse. It is equipped with a generator for light and power, an acetylene torch, a saw to cut through concrete and steel and various other emergency lights and ropes. A full force of ten radio operators can put a mobile unit with Civil Defense equipment in each square mile in town.