

THE LIBRARY

"All that mankind has done, thought, gained or been; it is lying as in magic preservation in the pages of books." — Carlyle

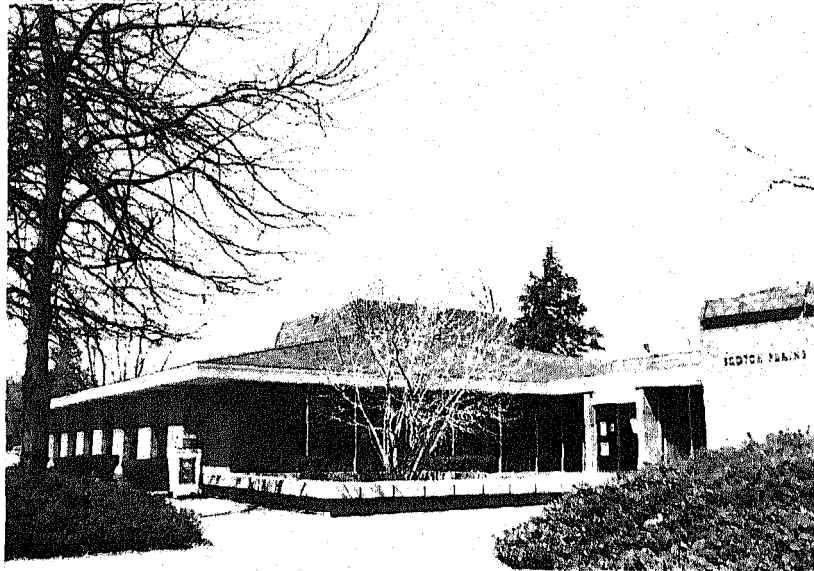
A group of citizens founded the Scotch Plains Reading Society in 1810. In 1816 the Scotch Plains Library Company was formed, and in 1888 this private association was incorporated. The library had its first home on the second floor of the Excelsior Hook and Ladder Company. In 1937 the Library Board supervised the construction of a small brick building which served the Township for over thirty years.

In 1963, as a result of public referendum, the library became a municipal library, and in 1966, \$550,000 was authorized for the construction of a new library building. Sixty thousand dollars was previously expended for the purchase of land adjacent to the old building and the new structure was built on the site of its predecessor. A federal grant of \$75,404 was applied towards construction costs by the Township. Thus, for the sum of \$534,596, the new facility was completed in the spring of 1968.

Scotch Plains is a member of the Plainfield Area Library. Each area library provides inter-library loans, reference help, and invitations to attend its workshops. Through this affiliation Scotch Plains can draw on the resources of the libraries of Rutgers and Princeton Universities together with Newark and Trenton libraries.

There is reciprocal borrowing, for possessors of a library card, with Berkeley Heights, Bound Brook, Dunellen, Middlesex, New Providence, Passaic Township, Piscataway, Springfield, Summit, Warren Township, and Watchung.

The Mid-Union System Cooperating Library Enterprise (MUSCLE) is an agreement among member libraries that allows borrowers in good standing to borrow materials from any library within the system, subject to each individual library's restrictions. A Township resident would use his Scotch Plains Library card to borrow from the other libraries. Cooperating libraries are the libraries of Clark, Cranford, Fanwood, Kenilworth, Mountainside, Rahway, Roselle, Roselle Park, and Westfield.



"Scotch Plains Public Library"