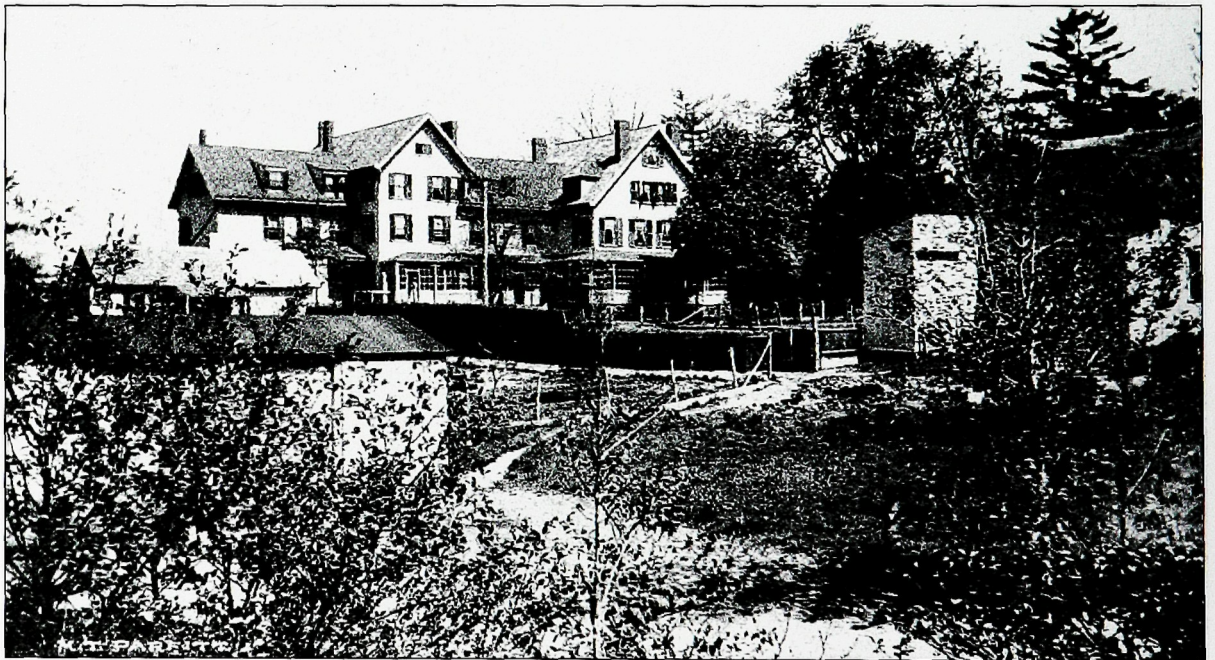




**FROM GUESTHOUSE TO RESORT.** Realigning the railroad tracks through the “Fanwood Cut” in 1874–1875 brought an increase in visitors to the area. A local guesthouse known as the Russell House gained a reputation as a summer resort for visitors from the city. A rear wing was added and facilities were increased to accommodate as many as 50 guests. The Boucher family acquired the property in 1890, renaming it the Homestead.



**VERANDAS AND LANDSCAPES.** Graced with porches and verandas facing Watson Road, the Homestead property also featured five acres of beautifully landscaped grounds and tidy gardens, as well as tennis and croquet courts. A spacious dining room hosted musicales, dances, and other social functions for guests and invited borough residents.