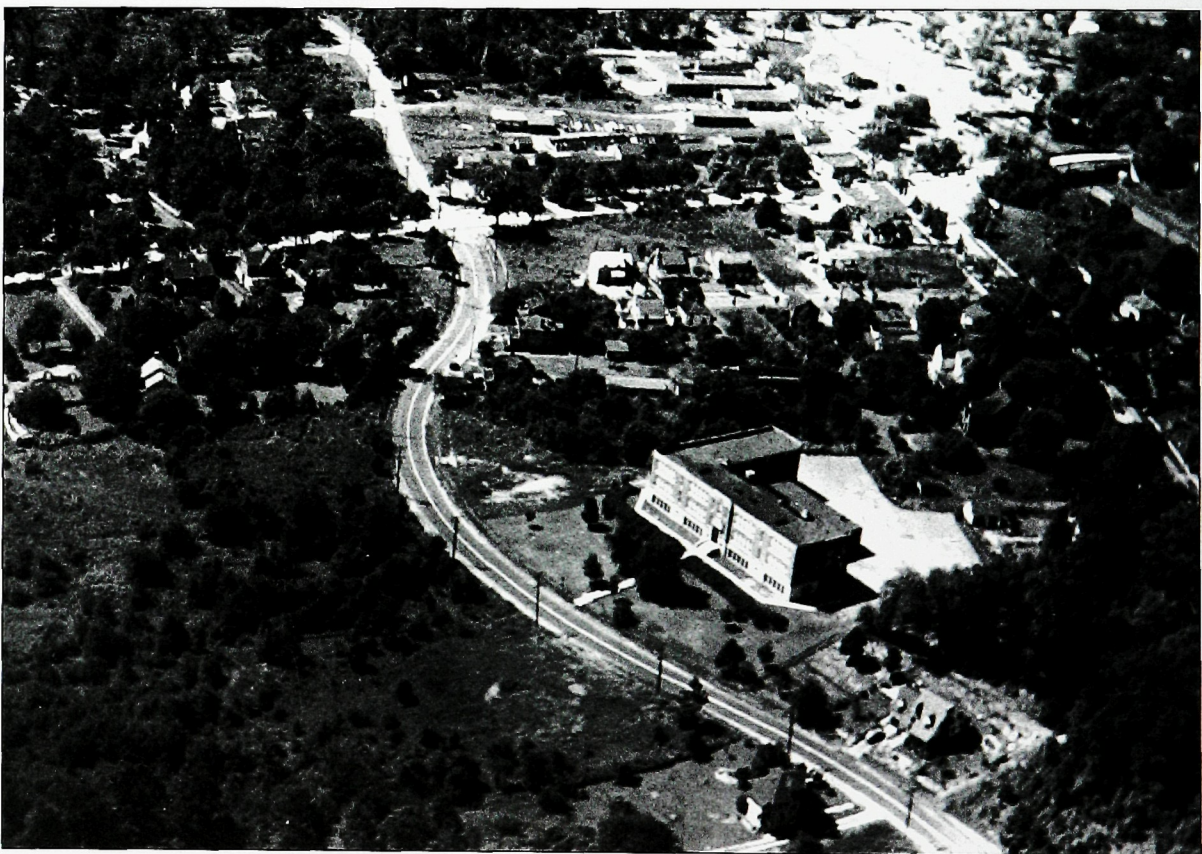


**AN OVERHEAD PERSPECTIVE.** This aerial photograph, overlooking the Martine Avenue railroad bridge in a southwesterly direction, reveals large lumberyard storage sheds off South Avenue. Beyond are trees where La Grande Park stands today.



**A VIEW FROM THE TOP.** La Grande Avenue winds past La Grande School to intersect with Martine Avenue, which is lined on both sides with trees. In this 1932 photograph, no stores are in evidence on Martine Avenue in the area between South and La Grande.