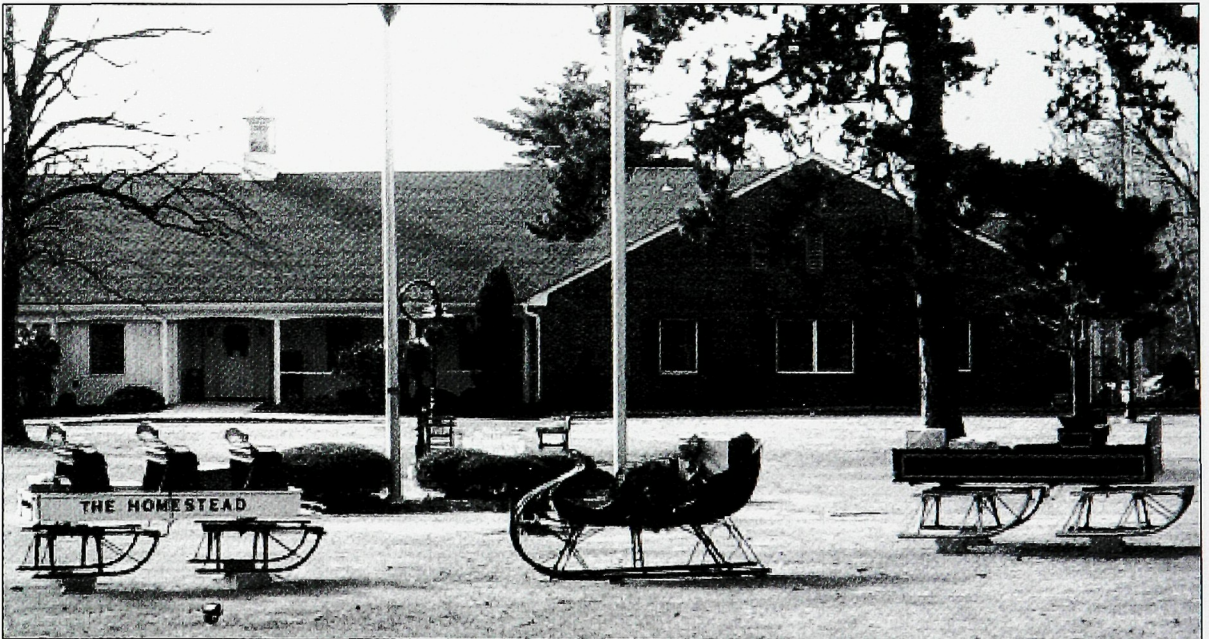


FANWOOD CENTENNIAL



1895 - 1995

THE HERITAGE SYMBOL. It is only natural that Fanwood's Centennial Celebration Committee selected the old railroad station for its centennial logo. The realignment of the railroad in 1874 and, with it, the construction of the station, were major influences in the creation of the borough.



ECHOES OF JINGLE BELLS. Two cargo sleighs and a passenger sleigh appear each year on the grounds in front of borough hall during the December holiday season. Three residents—Carl Eschle, Bob Germinder, and Joe Schott—have restored these sleighs, which once served the Homestead Hotel.