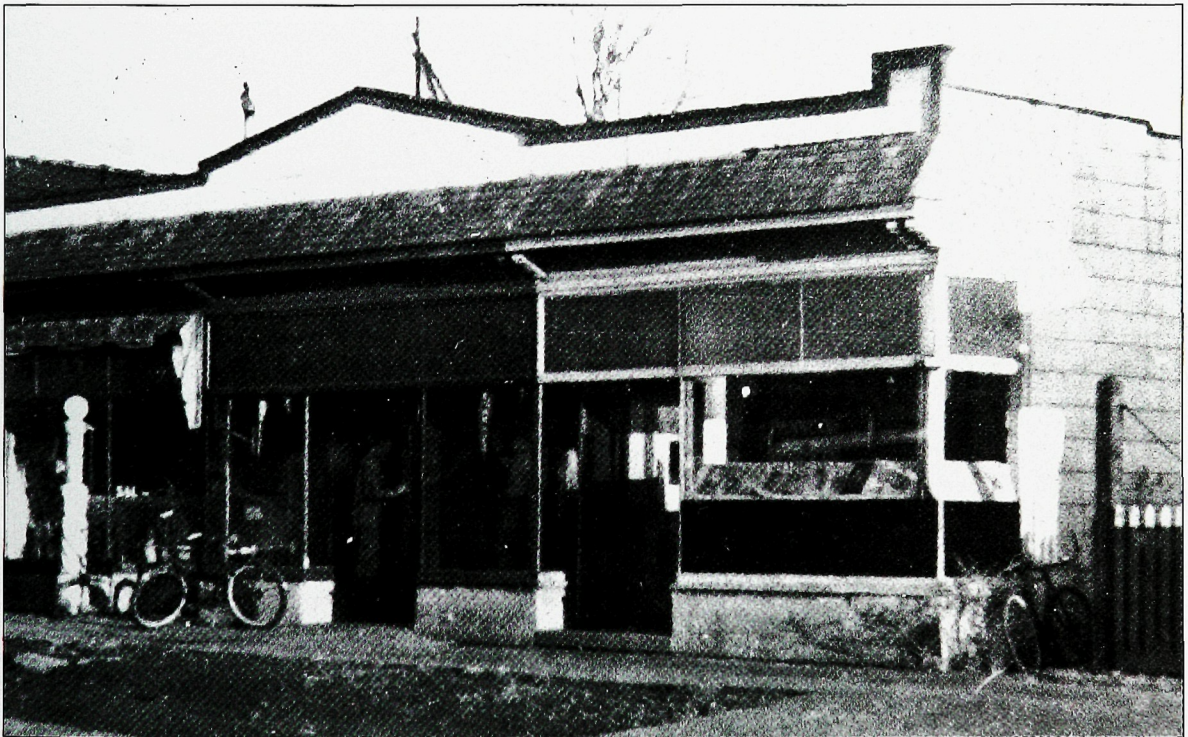




THE OLD POST OFFICE. The first Fanwood post office was built in 1897 in the Richardsonian Romanesque style. Located on Martine and North Avenues, this building is a traditional landmark of Fanwood. The rough-faced squared stonework, conical roof line, and large eyebrow dormer are its unique features. It was constructed by the Central Jersey Land Improvement Company and was given to the borough.



THE FANWOOD LIBRARY. During the 1940s, the Fanwood Library moved to a South Avenue storefront. The move took place to accommodate the growing collection of books and an expanding circulation. Janet B. Carter, the librarian for 13 years, supervised the transfer of books. Following her resignation, Olive Harris was appointed librarian.