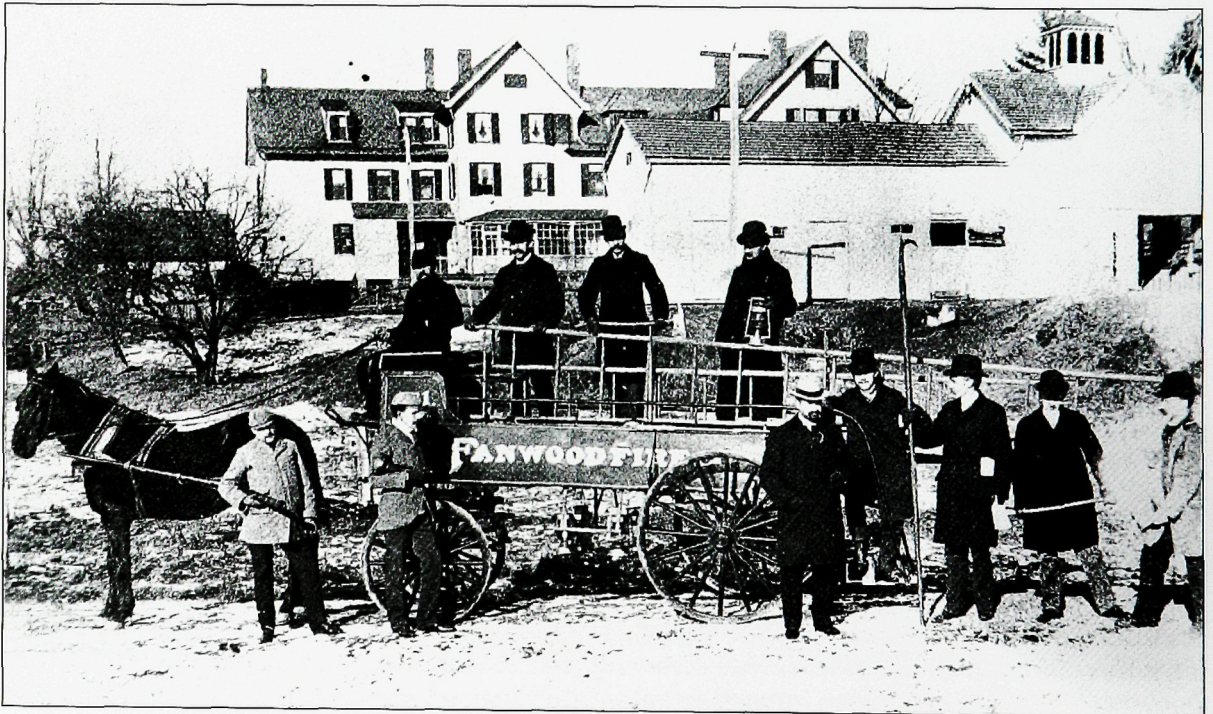




THE EXCELSIORS. In 1880, Fanwood Township was composed of the two communities we know today as Fanwood and Scotch Plains. In this photograph, members of the Excelsior Fire Department pose in front of their firehouse in fire-fighting gear, with their mascot nearby.



THE EARLIEST MEMBERS. The original Fanwood Fire Company wagon and volunteers are seen here on Watson Road. In the background is the Homestead Hotel and its carriage house.