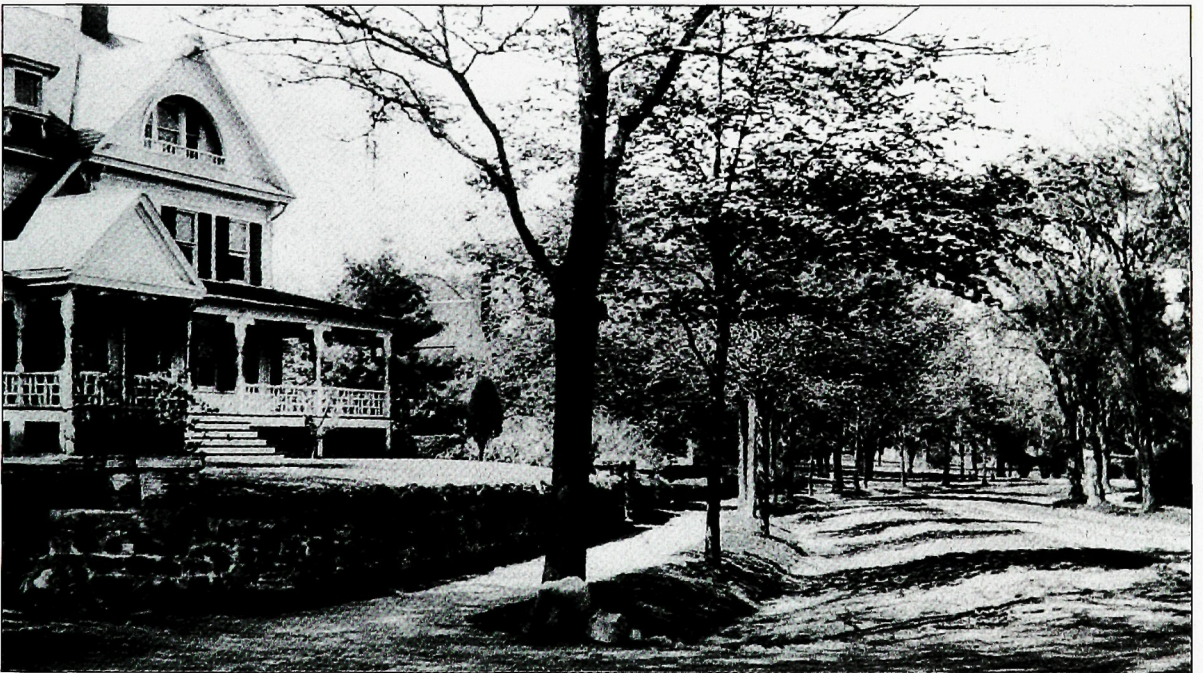




THE HOAR HOUSE. This Shingle-style house was home to W. H. Hoar, Fanwood's mayor from 1912 to 1917. Built in 1890, it bears several distinctive features. Eyebrow attic windows peek down on Fanwood's main thoroughfare, while the diamond-pane windows on the second floor give this Martine Avenue house a unique façade.



ATTRACTIVE FEATURES. As a member of the first board of health in Fanwood, Burton Hall made this his residence in 1885. Located on North Avenue, this is a classic Queen Anne-style house with a slate gable roof, showing square and hexagonal shingles with a copper ridge. Decorative wooden shingles on the second floor give a special appeal. There is a double front door and a porch around the first floor with turned column supports.