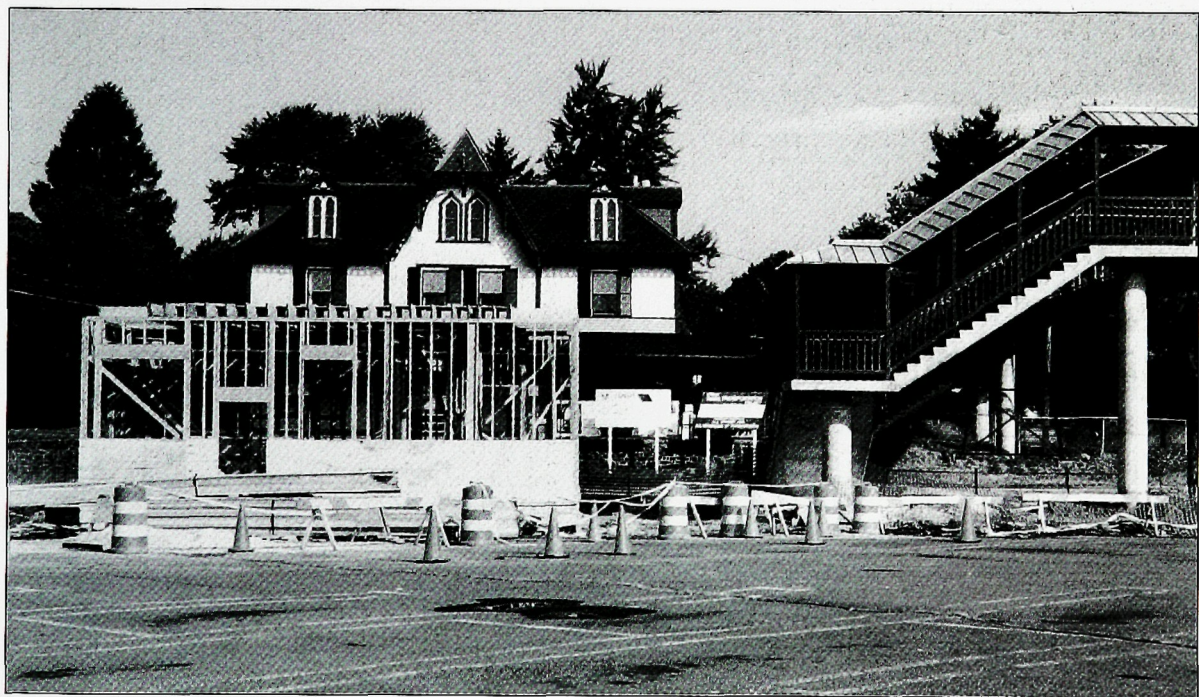




FLOODING. The trailing caboose of a freight train is seen in the 1960s as it heads westward under the Sheelen's Crossing Bridge on tracks covered by rampaging flood waters. Note the original bishop's crook lamp at the right, later replicated throughout the community.



NEW CONSTRUCTION. A new steel-and-concrete pedestrian overpass spans the roadbed as the framework of a new south-side station rises in this 1989 photograph.