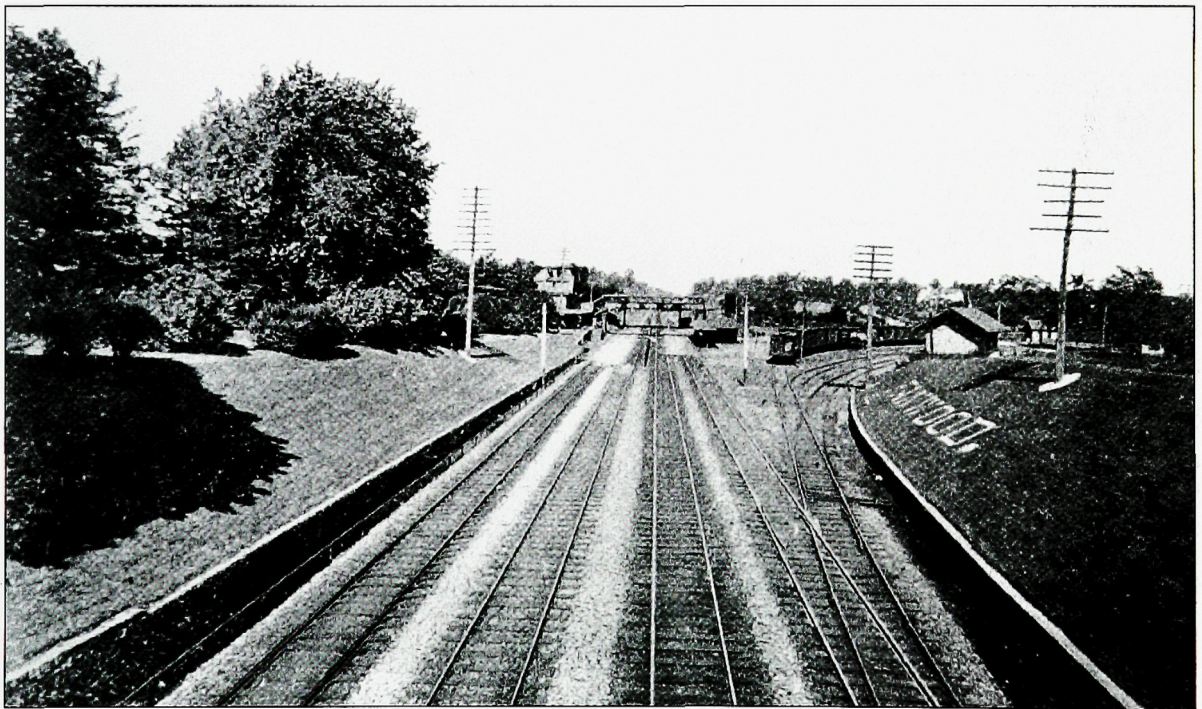


AN ENGINE AND SIDINGS. This westbound passenger train pauses at the Fanwood station to discharge and pick up passengers. The coal-burning steam engine spews a plume of smoke, which rises directly skyward.



THE 1930S STATION. This eastward view from the Sheelen's Crossing Bridge reveals the north-side Fanwood station grounds, the south-side track sidings, the freight station, and a sloping bank with letters spelling "Fanwood."