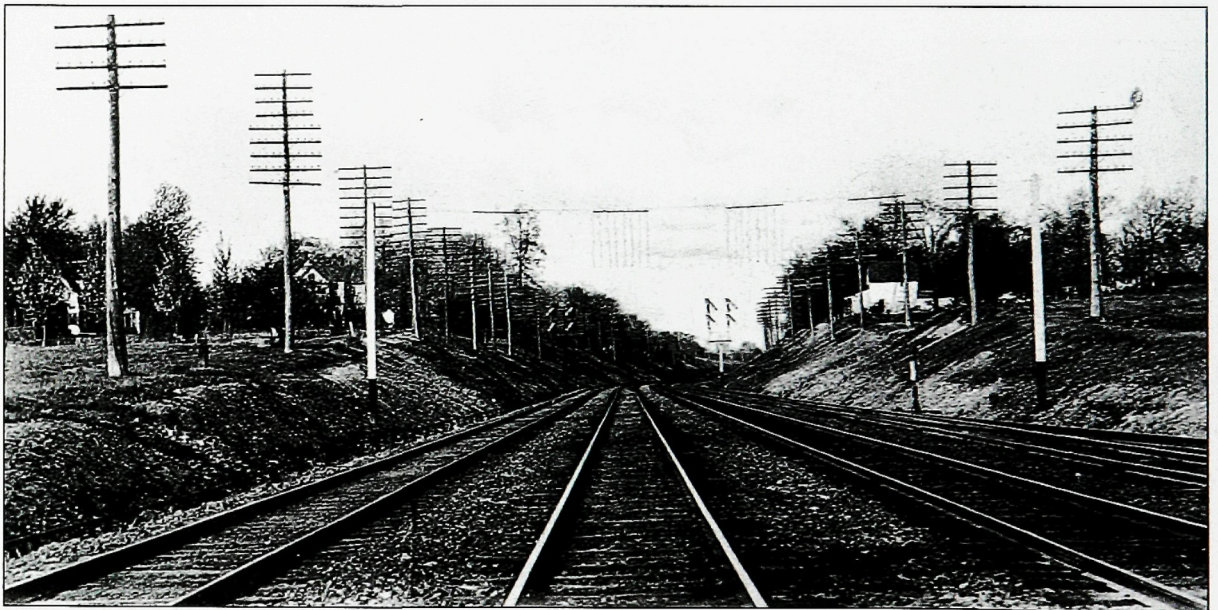


**THE STATION COMPLEX AND OVERPASS.** The Fanwood station complex c. 1900 consisted of the main station house on the westbound tracks, a pedestrian overpass to provide safe passage between the westbound and eastbound tracks, a small shelter for eastbound passengers, and a freight station, not shown.



**LOOKING EAST.** In 1909, the depth of the Fanwood cut is brought into sharp relief by the absence of trees in this eastward view from Martine Avenue. The four tracks served commuter, freight, and long-distance passenger trains. The telegraph lines provided the communication system for the railroad. Today, only two tracks are in place for use by commuter trains.