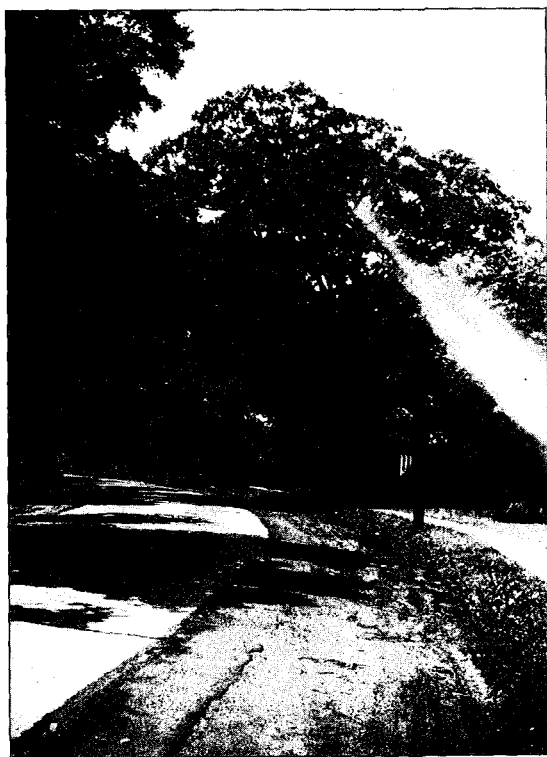


The second Fanwood Post Office, c. 1940. Located on South Avenue in Fanwood, just east of Martine Avenue, this second post office stood across the street from the current one.



The Fanwood oak. This majestic oak tree stands today, shading Martine Avenue in Fanwood. The tree is thought to be the second largest in the state of New Jersey, and it is protected by the Union County Shade Tree Commission. Over the years, tree surgery has helped to preserve this grand old oak. Notice the mixed concrete and asphalt roadway, and the absence of curbing, in this c. 1940 photograph.