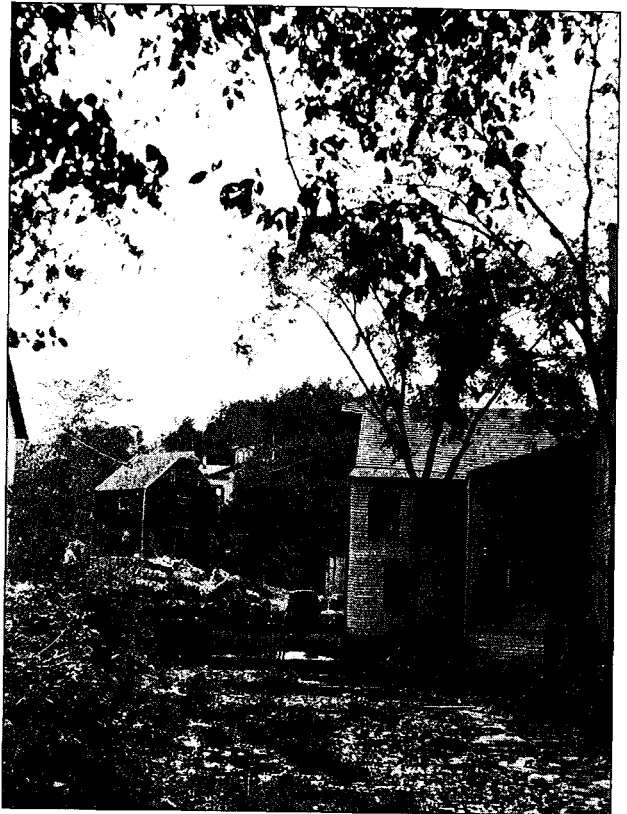


“Sandwiched—a glimpse of the old and the new” from *Artistic Photo Views, Scotch Plains, Fanwood and Feltville* (Series J, Second Edition; published by G. Thorn, Plainfield, NJ). This stereo-image shows both the new and old buildings of Seeley’s mills and the surrounding area.



Cook’s crusher, c. 1889, north of the gorge on the Green Brook. The steep mountain provided water power for use in quarrying stone.

