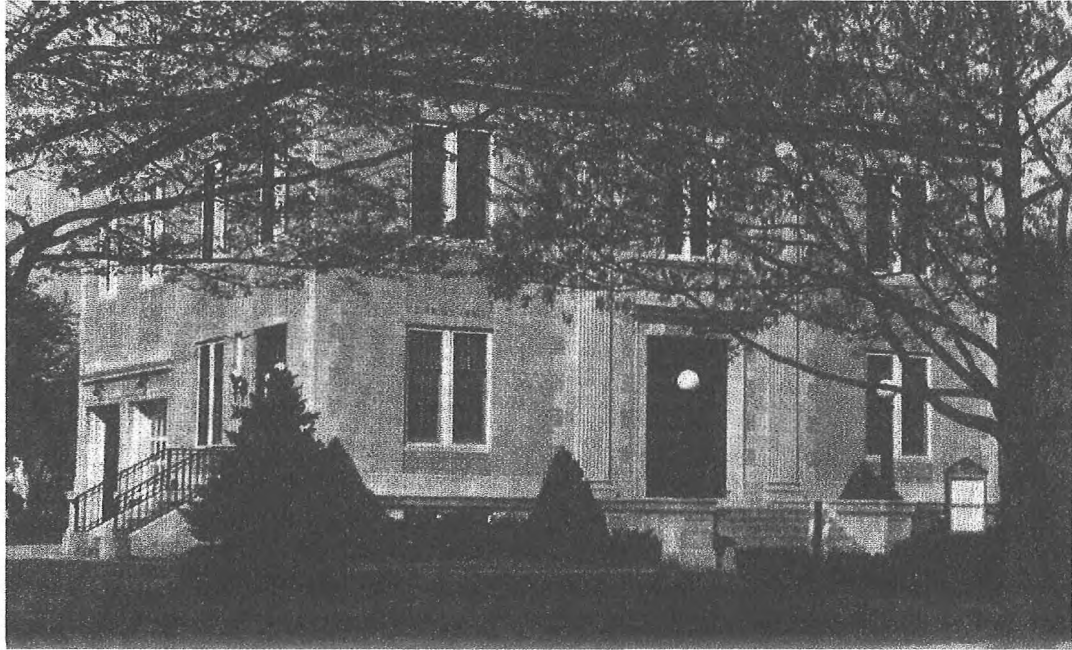


The Municipal Building



The municipal building was the center of our community. The gray brick and the lovely trees surrounding it are vivid in my memory. It housed the township offices, courthouse, jail, and fire department--all in one building. A class trip to this site was very exciting for a kid in the elementary school.

All community events began here. Memorial Day and Fourth of July parades, and the unforgettable Halloween night parades around the building. After "trick-or-treating," the whole town turned out for the parades and prizes were awarded for best costumes. I remember so well the excitement of the evening.

As the community grew, the original building could no longer accommodate all the departments. In the 1960s, it was demolished, and with it went the old Scotch Plains.

