

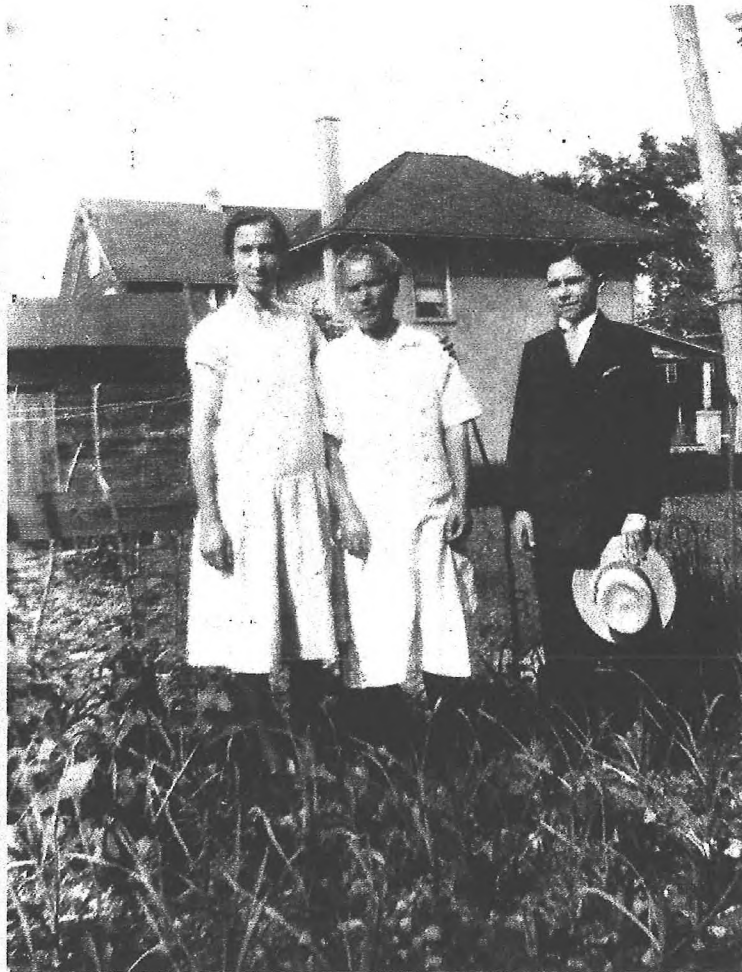
1920s

Clementina Iaione

Clementina Bruno and son

Mountain Avenue

(Iaione house in far background)



This is the earliest picture of my mother in America. Mrs. Bruno was our neighbor and one of the first from the village of Montazzoli to settle in Scotch Plains in the early 1890s. I can remember my mother speaking lovingly of Mrs. Bruno--how much she helped her when she came to America. Mrs. Bruno had five daughters and one son. The son died at a very young age.