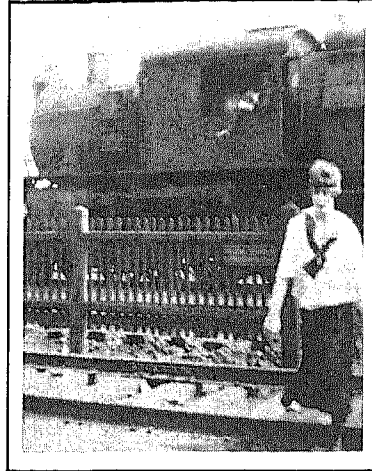
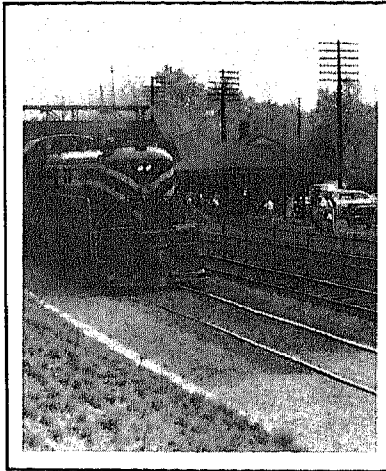


# SCRAPBOOK

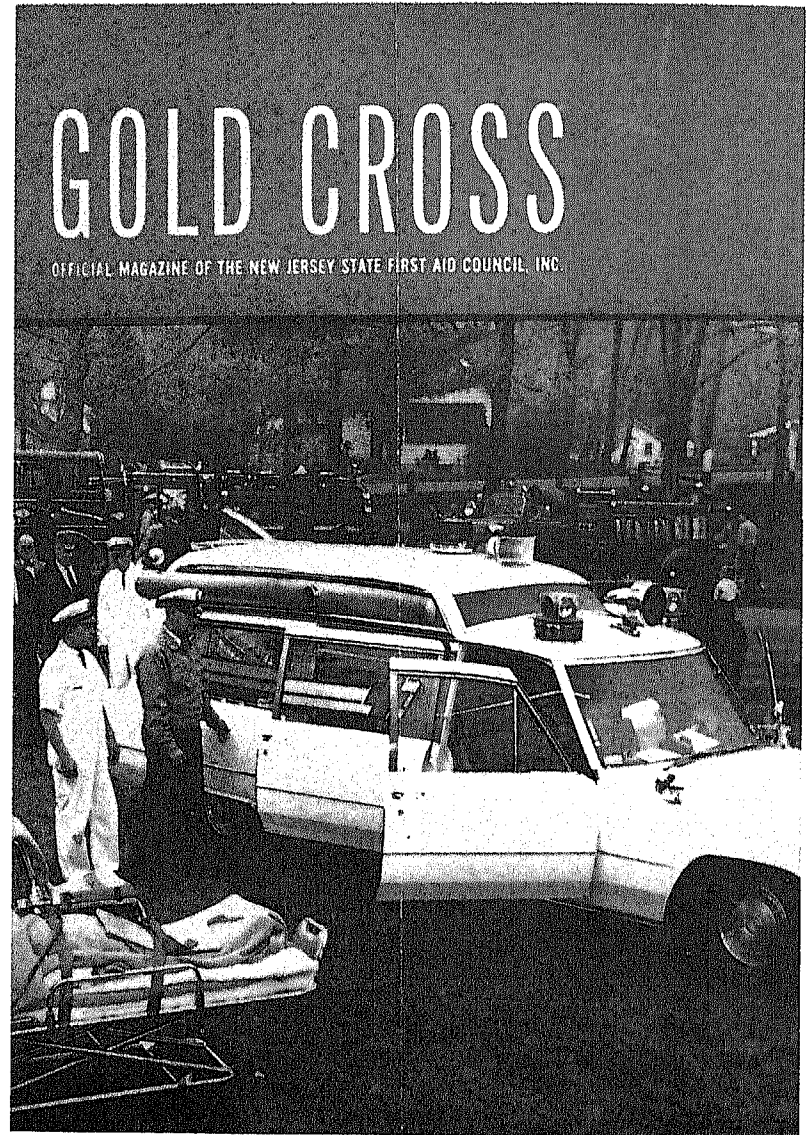


*On left: One of the last steam locomotives to pass through Fanwood in the late 1950's.*

*On right: A locomotive was photographed as it stopped at Fanwood Park Train Station in 1917. It was a camel-back steam locomotive built in the Elizabethport shop of the Central Jersey Railroad between 1910 and 1918. They were used primarily to pull freight trains.*



*Tug of War contest at the annual firemen's picnic in June of 1952.*



## GOLD CROSS

OFFICIAL MAGAZINE OF THE NEW JERSEY STATE FIRST AID COUNCIL, INC.

*A joint drill of the Fanwood Rescue Squad and Fanwood Fire Company was held at the Fanwood Park Railroad Station in 1966.*