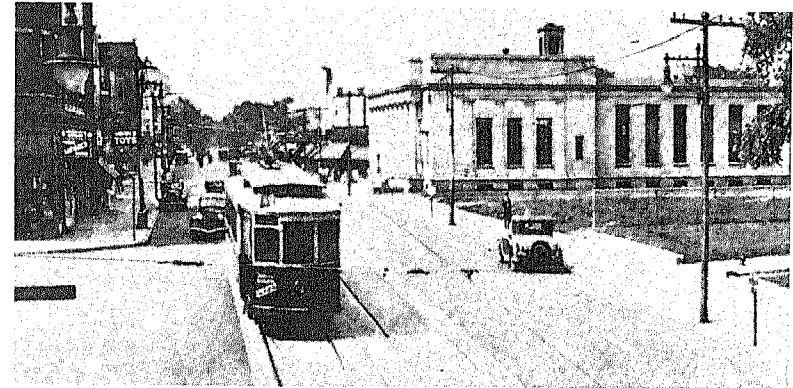




*The Central Railroad Station enabled a large number of wealthy commuters and businessmen to make Plainfield their home.*

served as storage areas for carriages. These so called "Carriage houses" were usually designed closely in style to the architecture of the main residence and were located on the rear of these properties. A survey of selected areas of Plainfield reveals a significant concentration of these structures located specifically along Field Avenue and West Eighth Street. While the mere existence of these carriage homes may not appear to warrant a detailed evaluation, the fact that these structures have survived the process of land development from the late nineteenth century, and their interesting adapted uses, points to one unique historical asset. Today a large number of these carriage homes have been tastefully renovated into contemporary homes, professional offices, or have retained their original function as storage for vehicles. As such, these structures possess not only interesting historical value but also unusual housing potential worth exploring.

As Plainfield developed, it became dotted with resort hotels for vacationers. Casino's were a part of the resort atmosphere in the major cities. Public balls, lectures and community festivals were also held in these Casino's.



*The trolley system that serviced Plainfield ran past the post office, seen in the right of the photograph.*

Until 1880, residents requiring hospital care were sent to Newark, the closest hospital. In 1880, Muhlenberg Hospital was built in the City of Plainfield. It was the first hospital in Union County and became an important part of the development of the area.

Shopping, industry and many entertainment events are attributed to the "Queen City". Residents from the surrounding communities would take advantage of the public transportation, which included a Trolley line running from Plainfield through Scotch Plains to Westfield, to enjoy the extensive shopping opportunities as a growing Plainfield became even stronger.

Today, Plainfield's churches of all faiths are united in the need to solve local problems. The "city of churches" is indeed a fitting name for our neighbor to the West.

As the home of the first public school in New Jersey in 1847, Plainfield continues to strive toward a solid level of education for all members of the city.

Fanwood residents have relied for a very long time on the goods, services and fellowship provided by the surrounding communities. Their interaction and reciprocation with Fanwood makes all of our communities stronger and more productive. ■