

HOMES OF FANWOOD

The residential development of the Borough of Fanwood paralleled the growth of the railroad. Rail service opened the farmland to the development of both residences and business. The Central Jersey Railroad itself promoted the development of Fanwood as early as 1867.

Fanwood Park, an area of over 350 acres, "with serpentine roads well kept in order, offering great inducements to those in search of a desirable location," was owned by the Central Land Improvement Company, a holding company of the railroad. It bordered the railroad tracts, where most of Fanwood's older homes had been constructed. Residential development occurred primarily on the north side of the railroad tracks, while commercial development dominated south side construction.

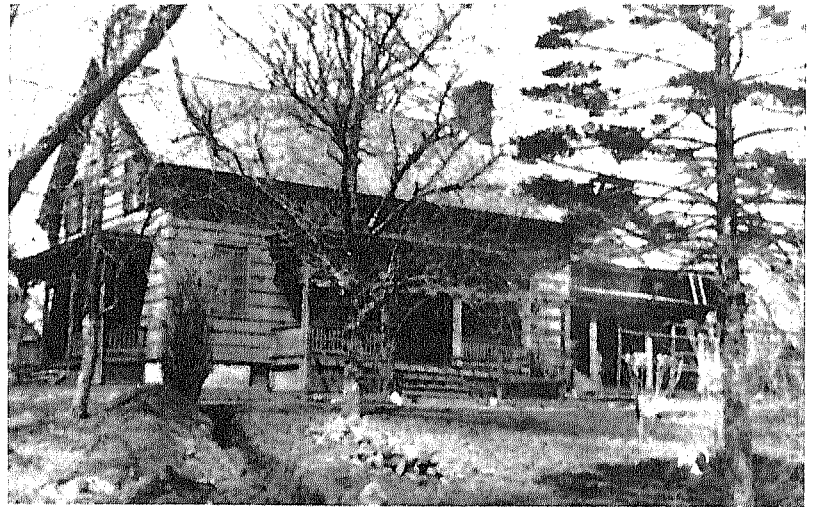
Hand Lumber and Coal Company, located on South Avenue opposite the railroad station, built the homes on Stewart Place



The front facade of the J.H. Martine home.



W.H. Hoar, one of Fanwood's first mayors, resided at this home constructed on Martine Avenue in 1890.



The structure that was to become the J.H. Martine home was originally a simple frame farm house erected in 1774.