

# 1920's

---

	USA	FANWOOD
Population	105,710,620	783

---

## Mayors of Fanwood

SAMUEL B. THOMPSON 1924-1925

ALBERT I. NICHOLS 1926-1927

L.W. LOTT 1928-1929

## Life in Fanwood

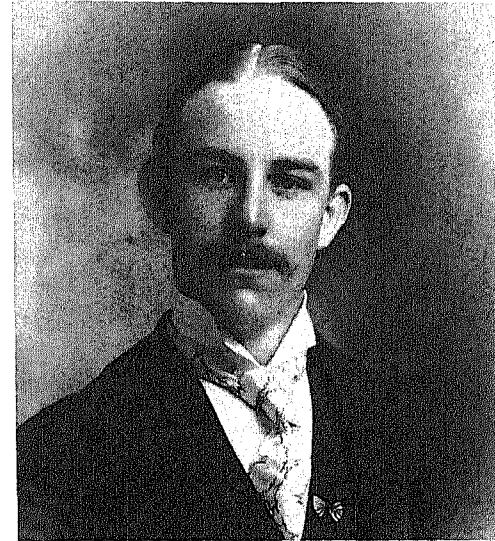
Charles Sheelen picked up your grocery order at your home in the morning and his employee, Pete Ritter, delivered it by a wagon pulled by his horse "Dolly" in the afternoon . . . Fanwood Garden Club was formed . . . the borough used a horse drawn wooden snow plow to clear the sidewalks and streets. . . elementary school teachers were paid \$1,200.00 per year, Junior High teachers \$1,400.00 and High School teachers \$1,600.00 with annual increases of \$100.00 a year in the Fanwood-Scotch Plains school system . . . the Homestead Hotel with its tennis courts is filled with guests . . . when you could build a tree house, a bridge over a brook or any other structure without a permit . . . concrete sidewalks are put in on South and Martine Avenues . . . Belvidere Avenue, Harold Avenue (now Burns Way) and Herbert Avenue were known as Fanwood Terrace.

## Tunes of the Times

I'm Just Wild About Harry — Blue Skies — Ol' Man River — Ma! He's Making Eyes At Me — Second Hand Rose — If You Knew Susie — Dinah — Singing In The Rain — Yes Sir That's My Baby — Five Foot Two Eyes of Blue — April Showers.

## Movies and Actors

Wings — The Ten Commandments — The Birth of a Nation — The Kid — Seventh Heaven — The Jazz Singer.  
Jackie Coogan — Al Jolson — Mary Pickford — Greta Garbo — Janet Gaynor — Rudolph Valentino.



*Horace Grady Young, born in Fanwood on March 5, 1875, was the son of Fanwood's first mayor, Thomas Young. He was an early member of the Volunteer Fire Company and served as tax assessor and postmaster.*

## Signs of the Times

**1920**

War Memorial dedicated on Park Avenue in Scotch Plains

**1923**

Fanwood's first motorized fire truck a "Reo Speed Wagon" arrived by freight train

**1923**

Fanwood school #4 built at a cost of \$87,268

**1929**

Newark airport opens replacing Hadly airport at South Plainfield as New Jersey's major airport.